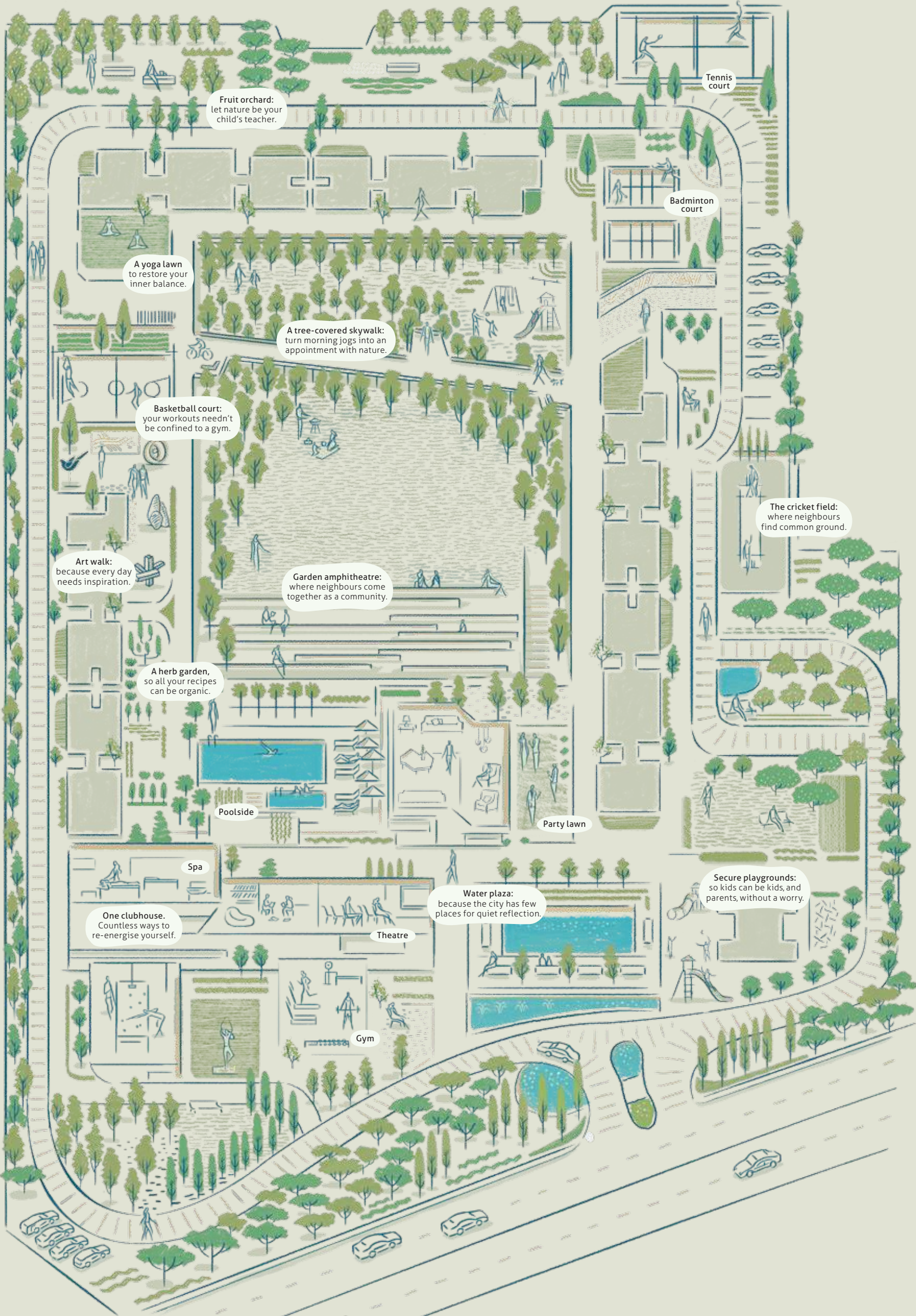


A 12-acre estate.

Every inch designed to improve your life.



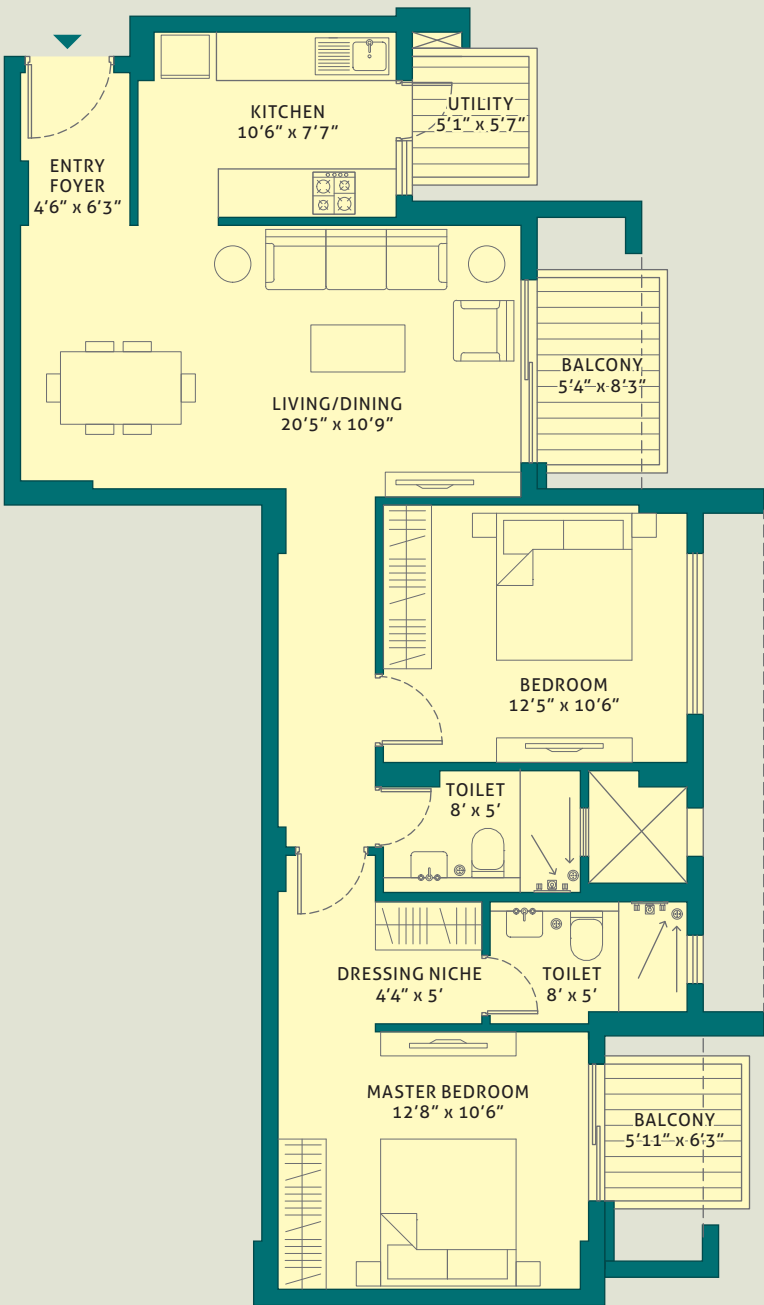
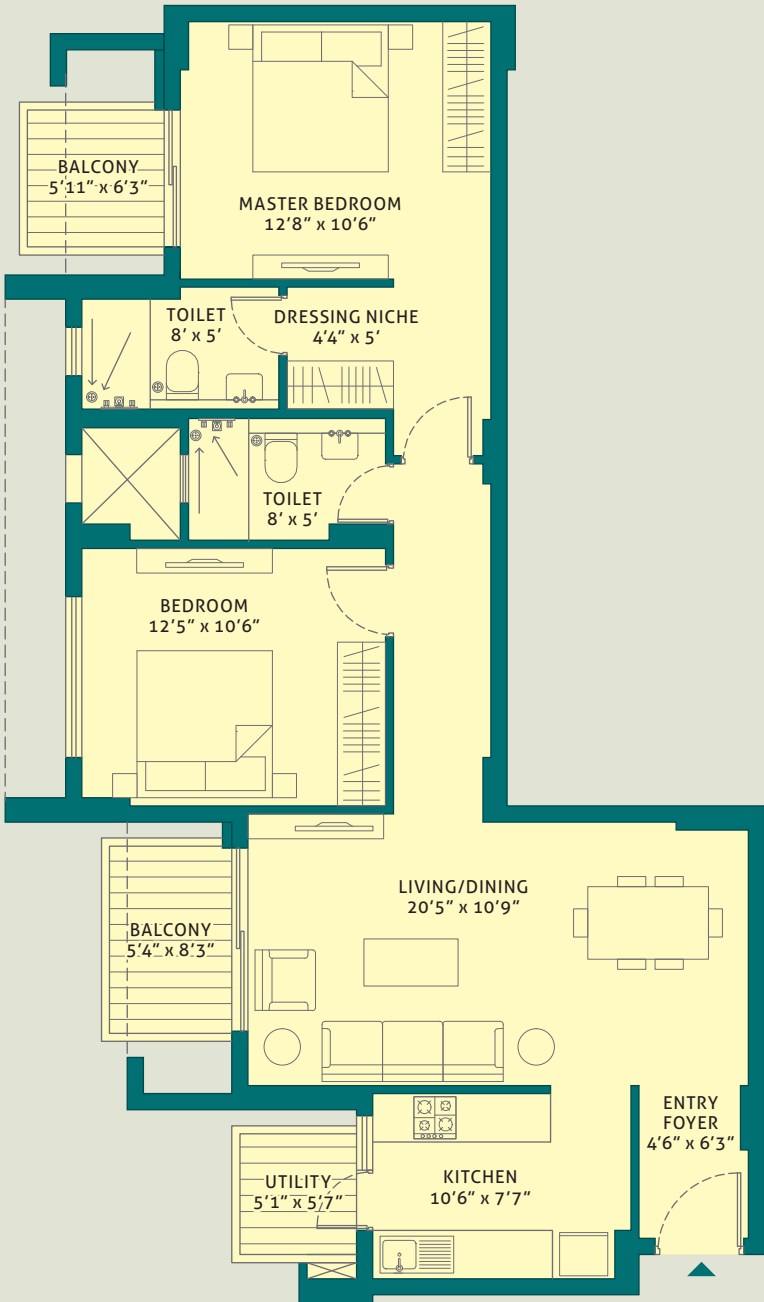
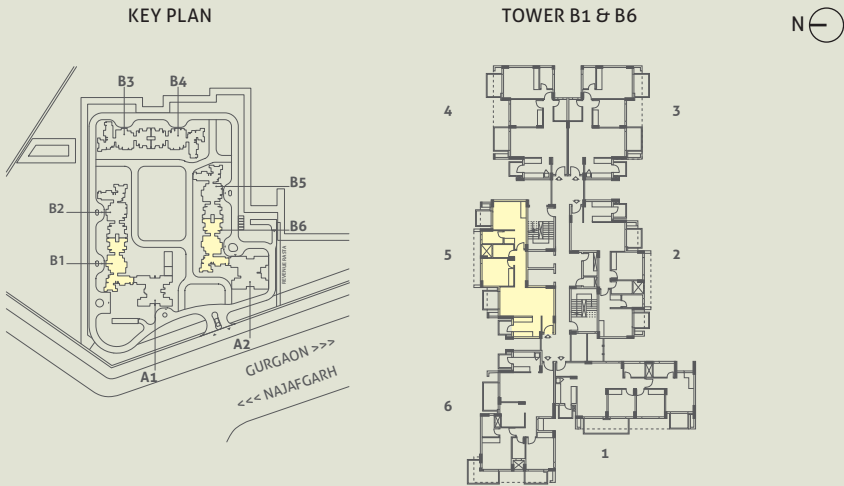
DEVELOPMENT PLAN



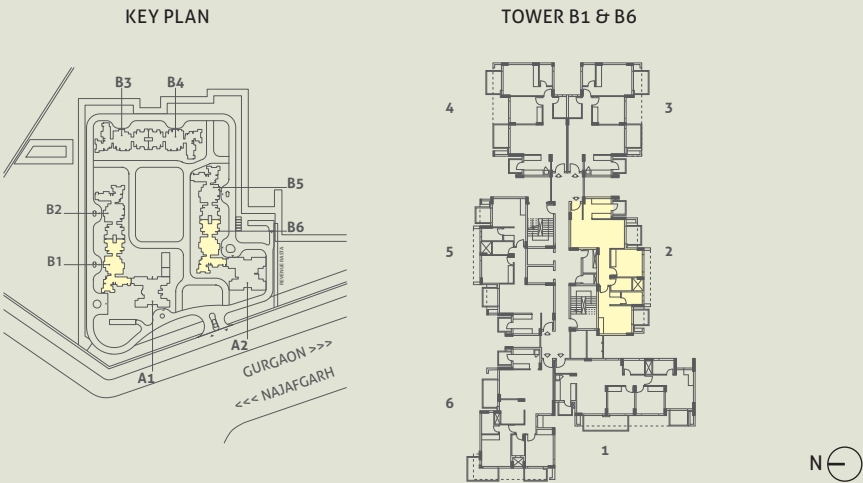
- | | |
|-------------------------------|--------------------------------------|
| 1 Main entry | 19 Kids' pool |
| 2 Guard room | 20 Swimming pool |
| 3 Lily pool | 21 Art installation plaza |
| 4 Water plaza | 22 Seating |
| 5 Seasonal retention pond | 23 Stepped seating and grass terrace |
| 6 Entry ramp | 24 Sunken garden |
| 7 Fruit tree bosque | 25 Skywalk |
| 8 Club forecourt / tree plaza | 26 Kids' play area |
| 9 Tower drop-off point | 27 Slide |
| 10 Basketball court | 28 Barbeque lawn |
| 11 Sandpit | 29 Party lawn |
| 12 Car parking | 30 Lawn |
| 13 Feature wall | 31 Herbal garden |
| 14 Badminton court | 32 Retail on ground floor |
| 15 Lawn tennis court | 33 Primary school G+2 |
| 16 Kids' play area | 34 Nursery school G+1 |
| 17 Artificial cricket pitch | |
| 18 Exit ramp | |

UNIT PLANS

TOWER - B1 & B6
UNIT 5
2 BHK
LEVEL - GROUND TO 13th
RERA CARPET AREA - 73.91 SQ. M. (795.53 SQ. FT.)
BALCONY AREA - 10.13 SQ. M. (109.04 SQ. FT.)



TOWER - B1 & B6
UNIT 2
2 BHK
LEVEL - GROUND TO 13th
RERA CARPET AREA - 73.91 SQ. M. (795.53 SQ. FT.)
BALCONY AREA - 10.13 SQ. M. (109.04 SQ. FT.)

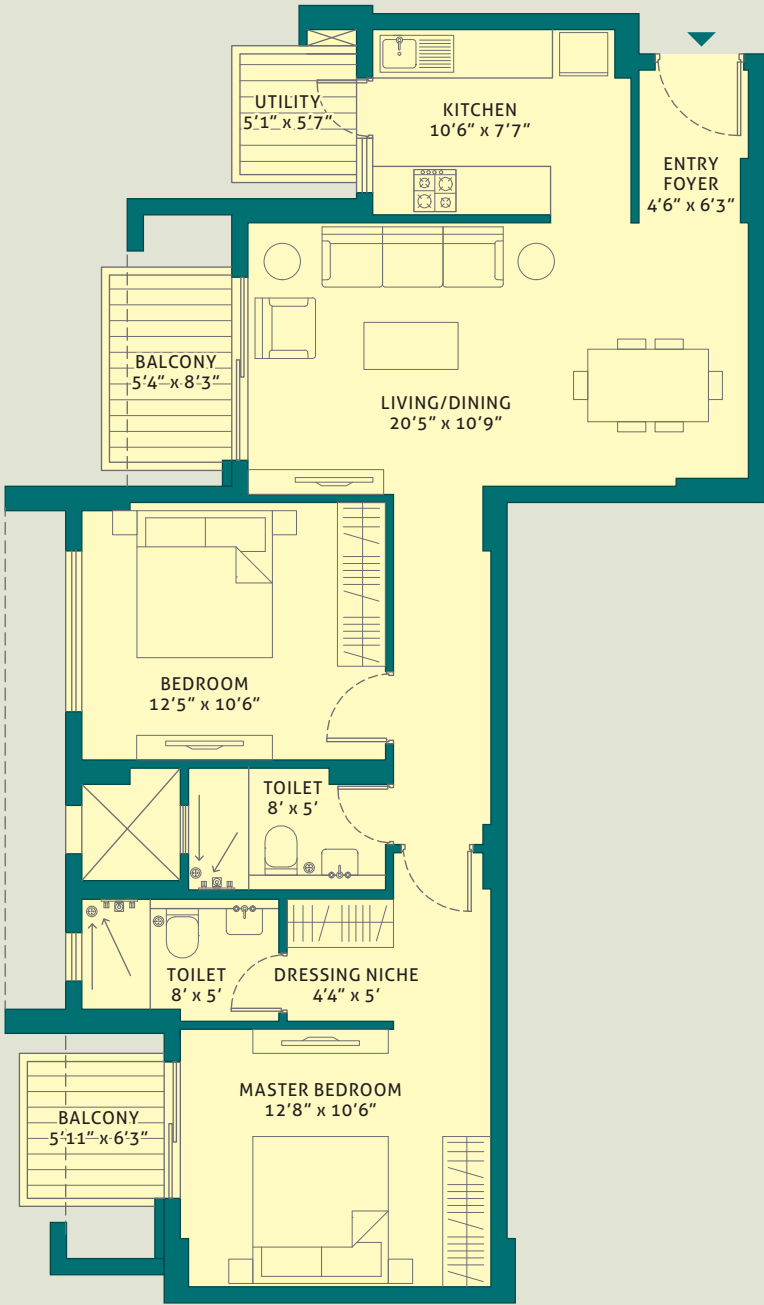
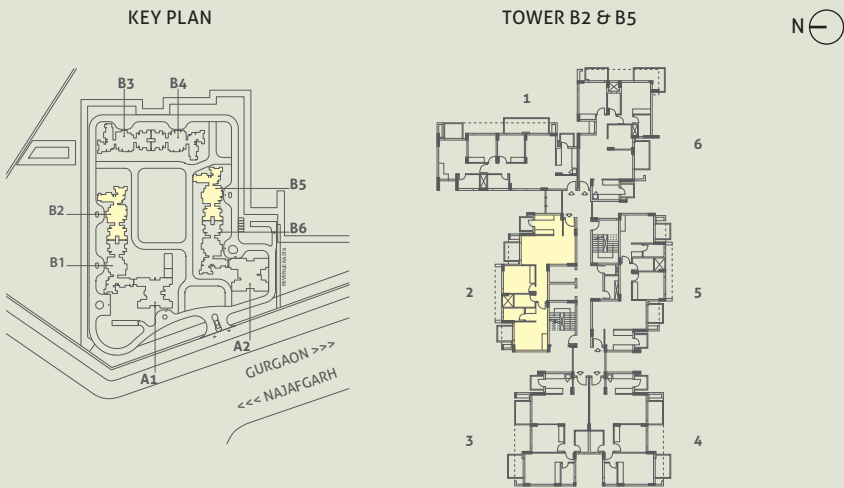


This is a typical floor plan, subject to minor variations. The furniture, fixtures and fittings etc. are for representative purposes and do not constitute part of the final product or any part thereof. The room measurements are mentioned in meters.

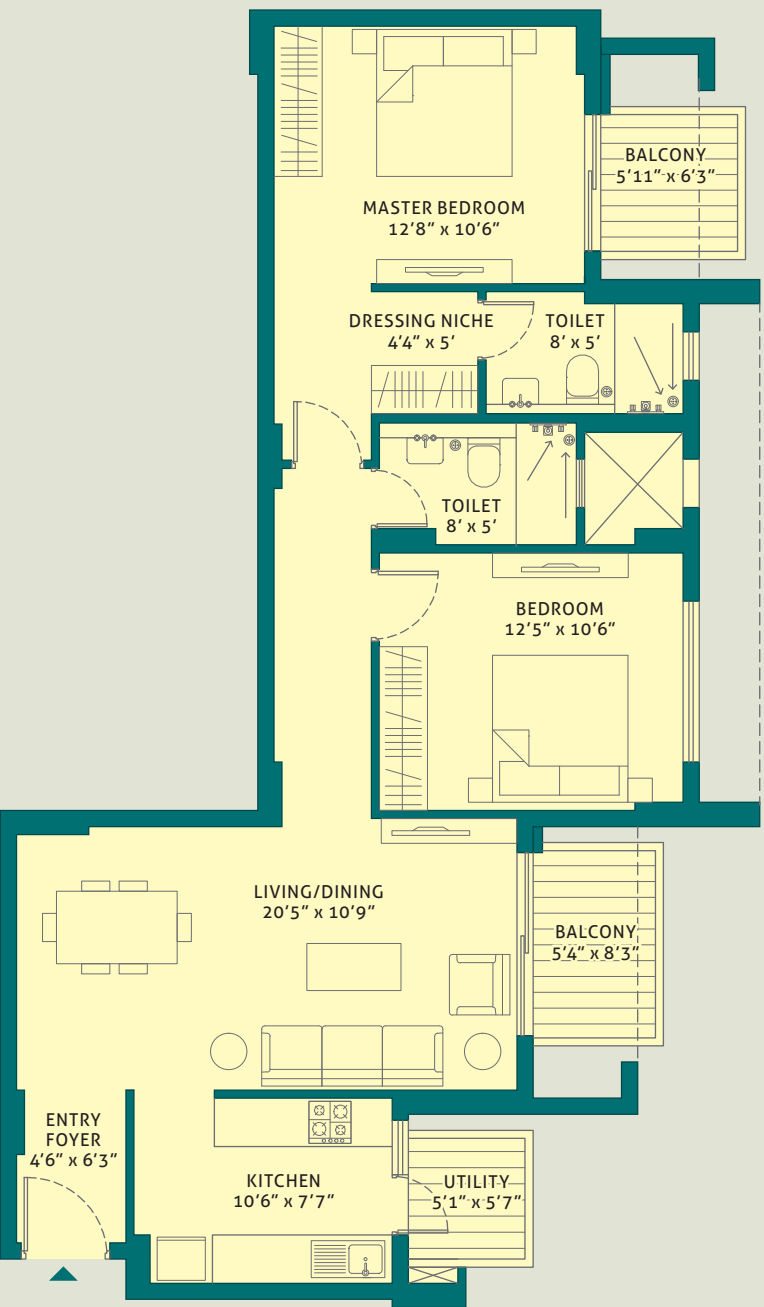
This is a typical floor plan, subject to minor variations. The furniture, fixtures and fittings etc. are for representative purposes and do not constitute part of the final product or any part thereof. The room measurements are mentioned in meters.

UNIT PLANS

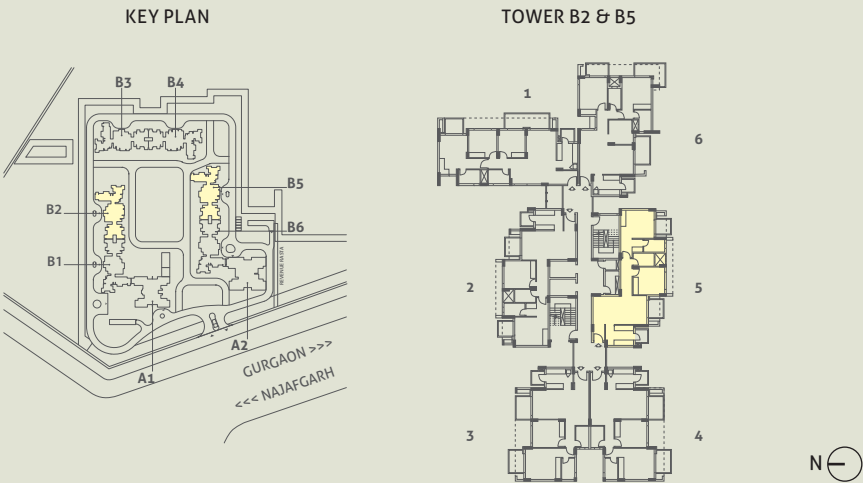
TOWER - B2 & B5
UNIT 2
2 BHK
LEVEL - GROUND TO 13th
RERA CARPET AREA - 73.91 SQ. M. (795.53 SQ. FT.)
BALCONY AREA - 10.13 SQ. M. (109.04 SQ. FT.)



This is a typical floor plan, subject to minor variations. The furniture, fixtures and fittings etc. are for representative purposes and do not constitute part of the final product or any part thereof. The room measurements are mentioned in meters.



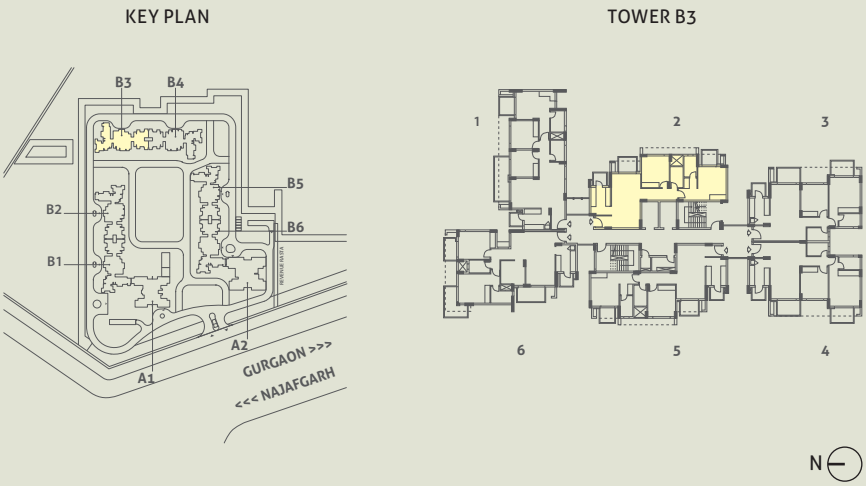
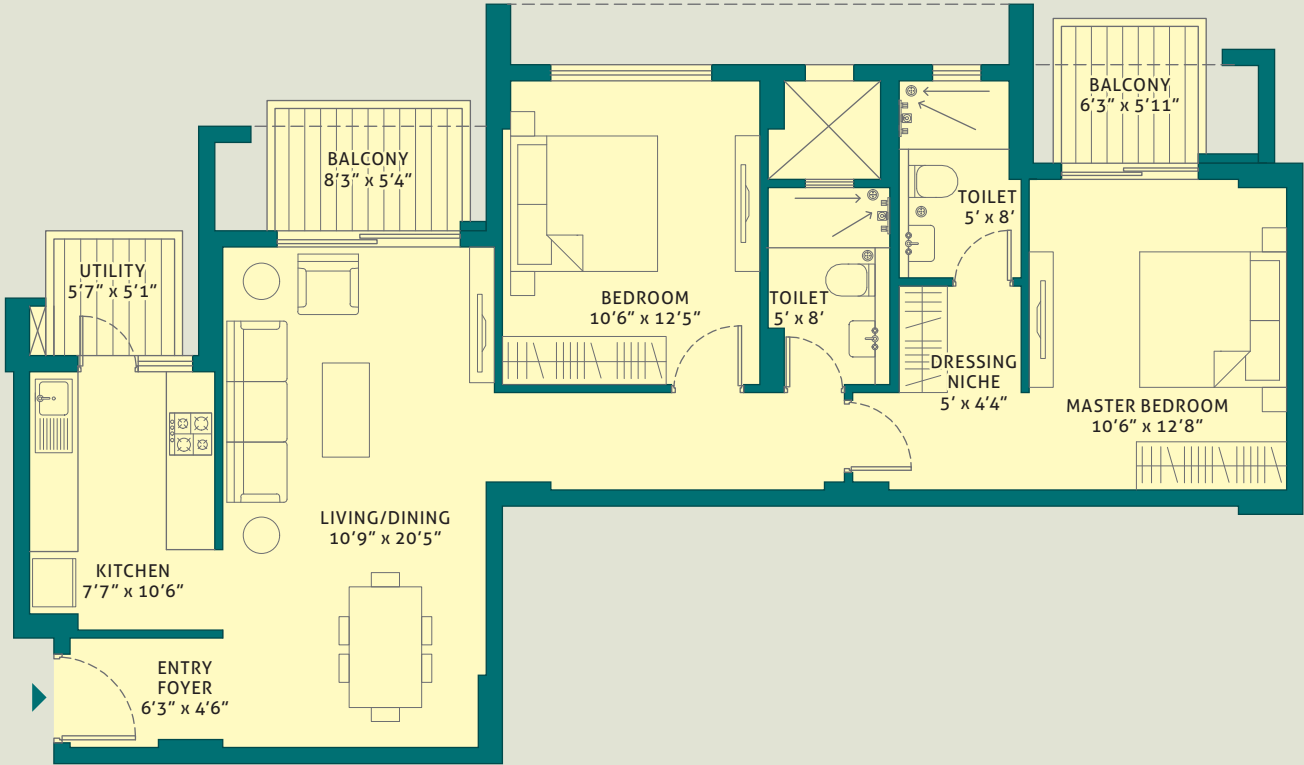
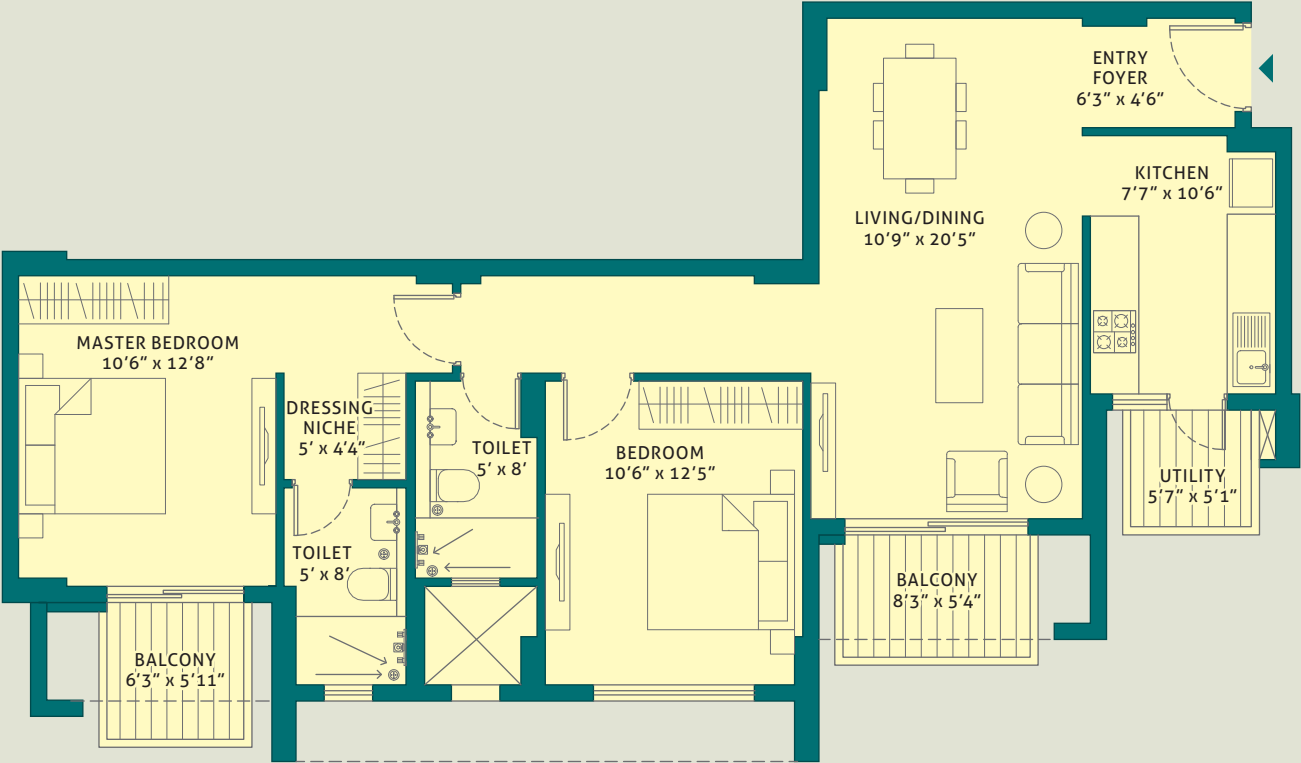
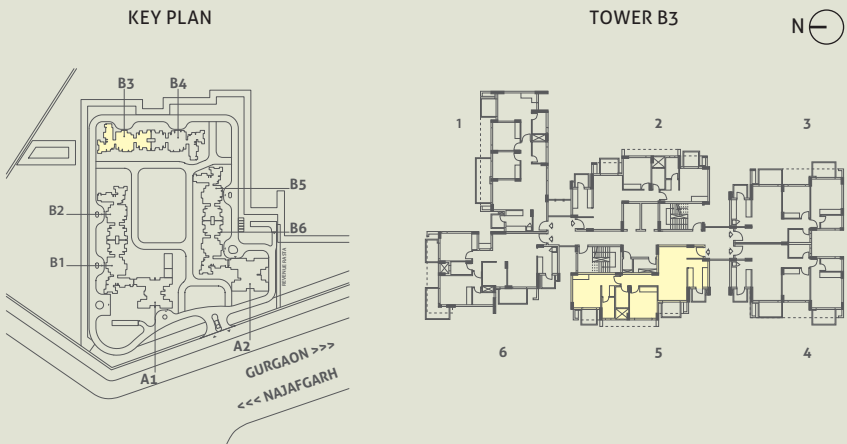
TOWER - B2 & B5
UNIT 5
2 BHK
LEVEL - GROUND TO 13th
RERA CARPET AREA - 73.91 SQ. M. (795.53 SQ. FT.)
BALCONY AREA - 10.13 SQ. M. (109.04 SQ. FT.)



This is a typical floor plan, subject to minor variations. The furniture, fixtures and fittings etc. are for representative purposes and do not constitute part of the final product or any part thereof. The room measurements are mentioned in meters.

UNIT PLANS

TOWER - B3
UNIT 5
2 BHK
LEVEL - GROUND TO 13th
RERA CARPET AREA - 73.91 SQ. M. (795.53 SQ. FT.)
BALCONY AREA - 10.13 SQ. M. (109.04 SQ. FT.)



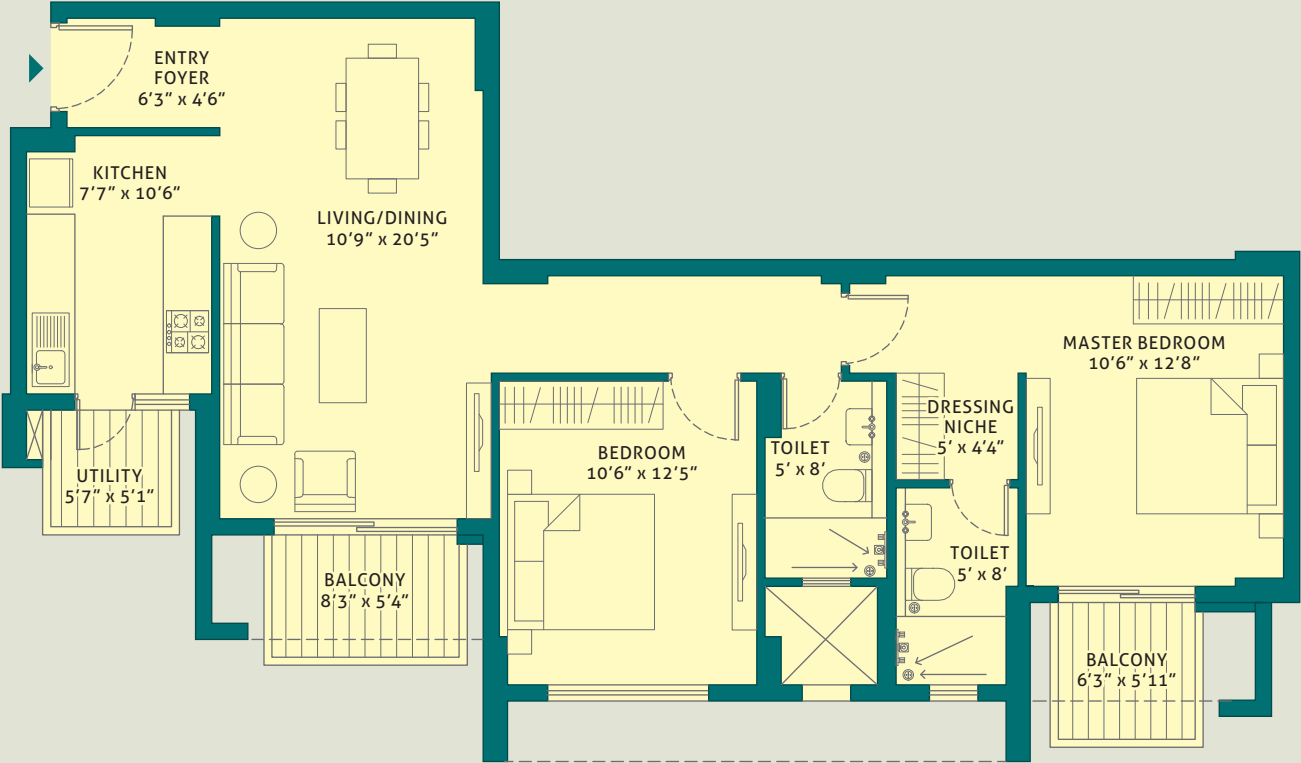
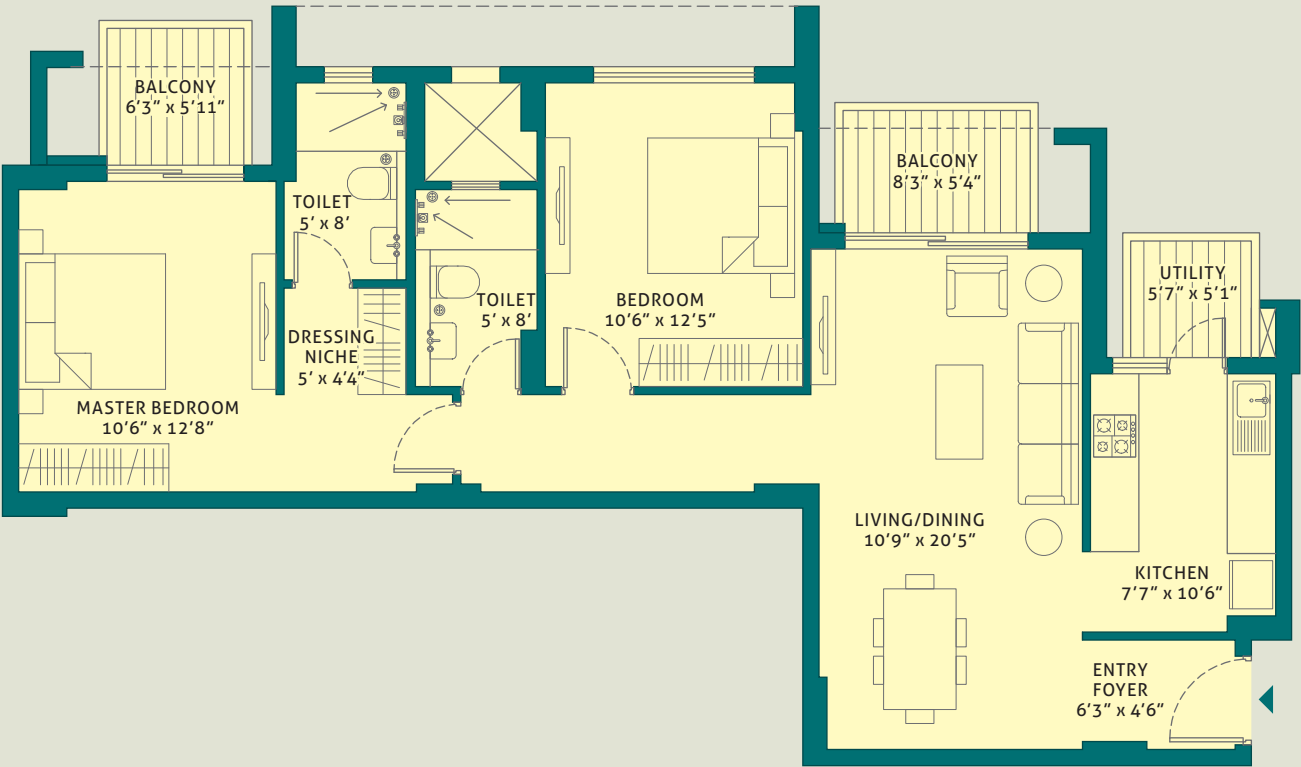
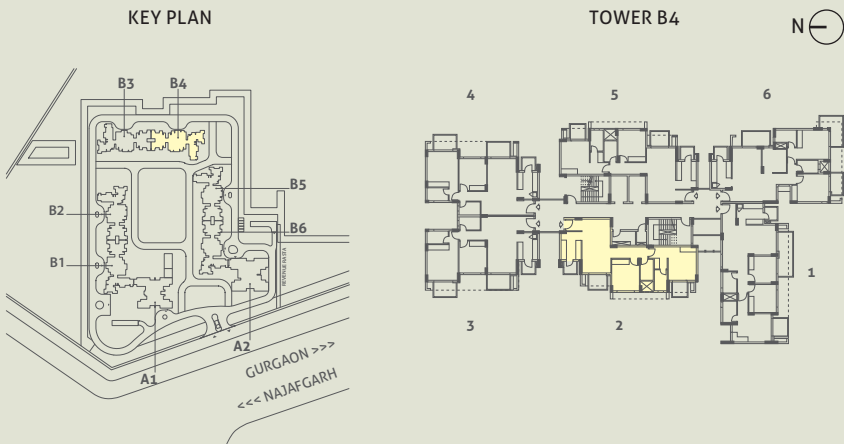
TOWER - B3
UNIT 2
2 BHK
LEVEL - GROUND TO 13th
RERA CARPET AREA - 73.91 SQ. M. (795.53 SQ. FT.)
BALCONY AREA - 10.13 SQ. M. (109.04 SQ. FT.)

This is a typical floor plan, subject to minor variations. The furniture, fixtures and fittings etc. are for representative purposes and do not constitute part of the final product or any part thereof. The room measurements are mentioned in meters.

This is a typical floor plan, subject to minor variations. The furniture, fixtures and fittings etc. are for representative purposes and do not constitute part of the final product or any part thereof. The room measurements are mentioned in meters.

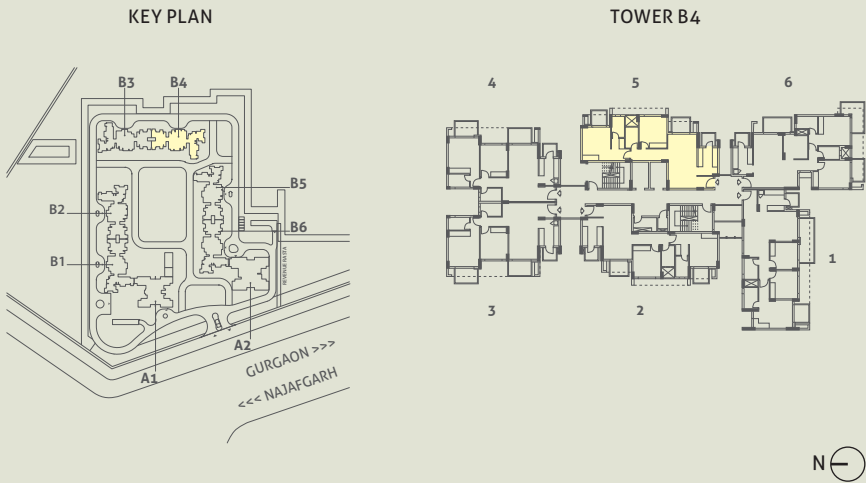
UNIT PLANS

TOWER - B4
UNIT 2
2 BHK
LEVEL - GROUND TO 13th
RERA CARPET AREA - 73.91 SQ. M. (795.53 SQ. FT.)
BALCONY AREA - 10.13 SQ. M. (109.04 SQ. FT.)



This is a typical floor plan, subject to minor variations. The furniture, fixtures and fittings etc. are for representative purposes and do not constitute part of the final product or any part thereof. The room measurements are mentioned in meters.

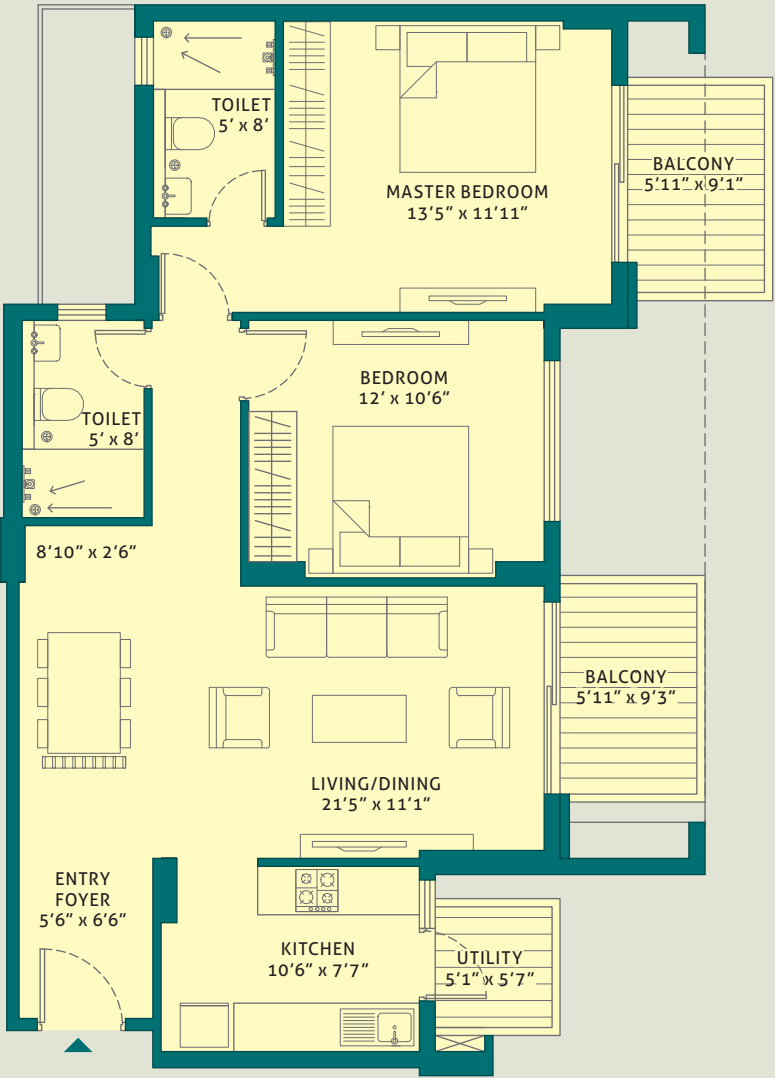
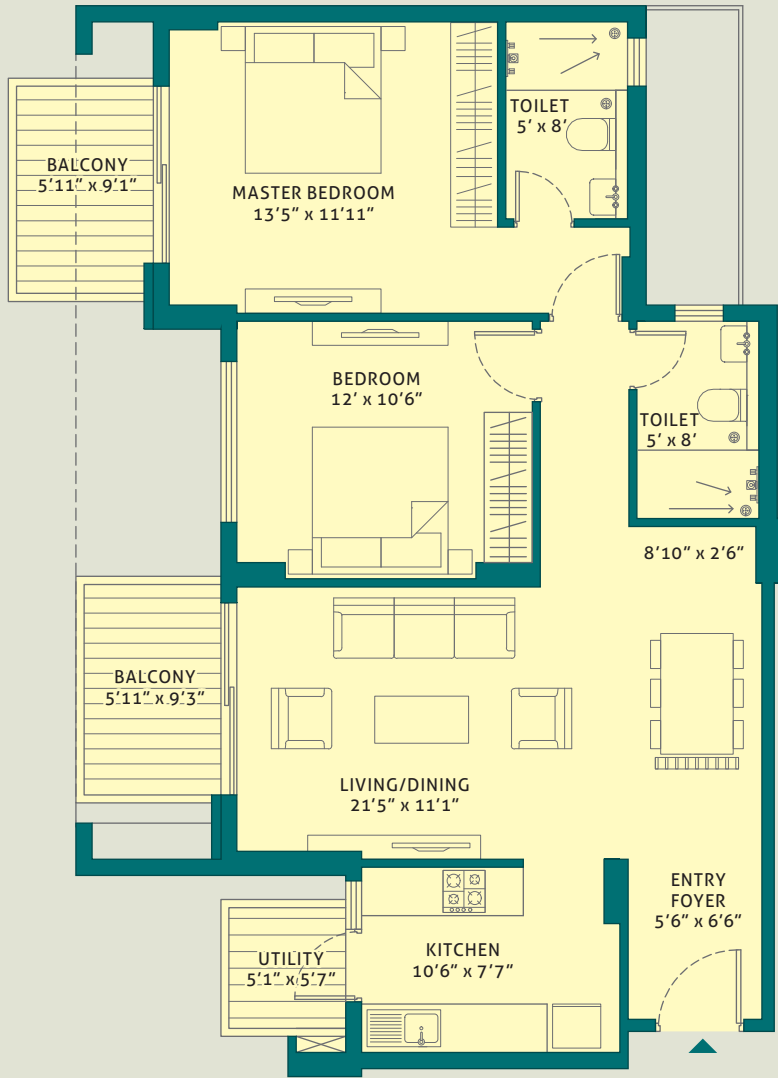
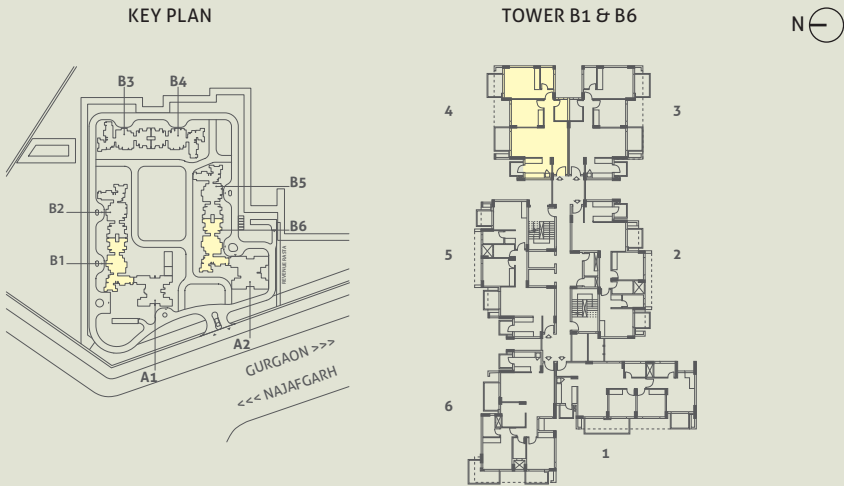
TOWER - B4
UNIT 5
2 BHK
LEVEL - GROUND TO 13th
RERA CARPET AREA - 73.91 SQ. M. (795.53 SQ. FT.)
BALCONY AREA - 10.13 SQ. M. (109.04 SQ. FT.)



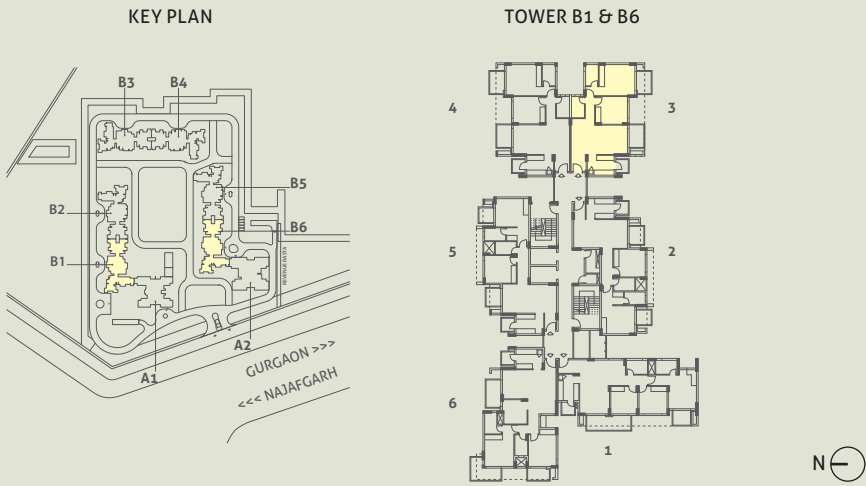
This is a typical floor plan, subject to minor variations. The furniture, fixtures and fittings etc. are for representative purposes and do not constitute part of the final product or any part thereof. The room measurements are mentioned in meters.

UNIT PLANS

TOWER - B1 & B6
UNIT 4
2 BHK (L)
LEVEL - GROUND TO 13th
RERA CARPET AREA - 75.26 SQ. M. (810.04 SQ. FT.)
BALCONY AREA - 12.63 SQ. M. (135.95 SQ. FT.)



TOWER - B1 & B6
UNIT 3
2 BHK (L)
LEVEL - GROUND TO 13th
RERA CARPET AREA - 75.26 SQ. M. (810.04 SQ. FT.)
BALCONY AREA - 12.63 SQ. M. (135.95 SQ. FT.)

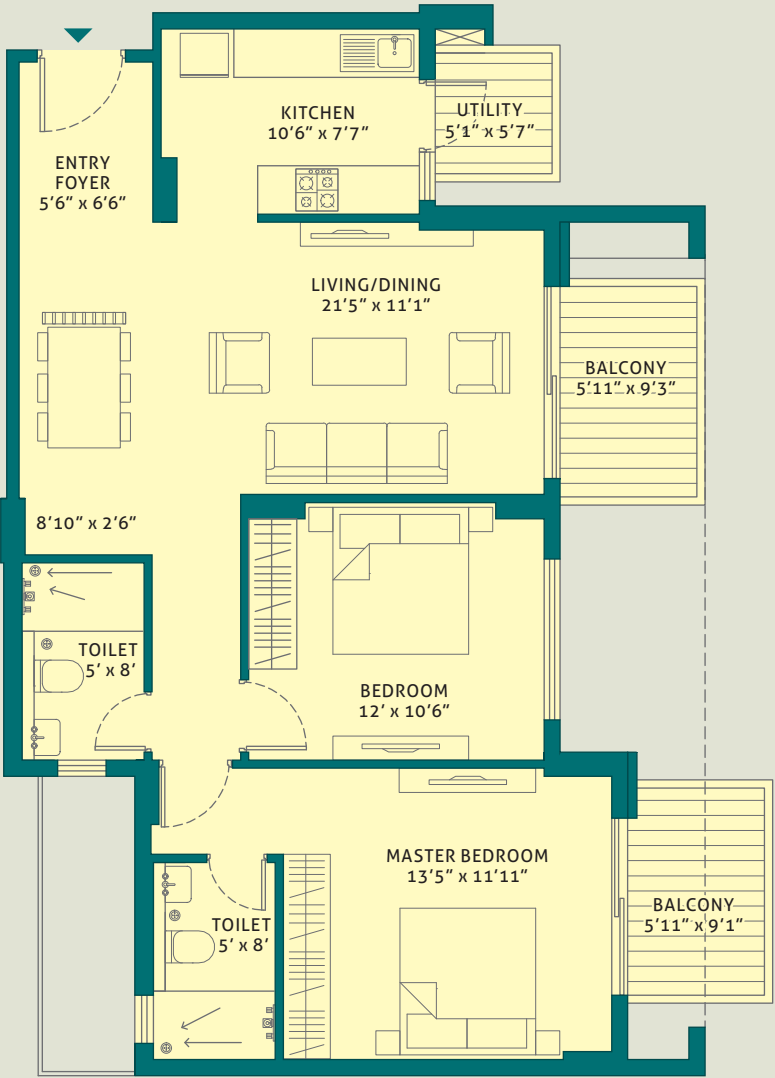
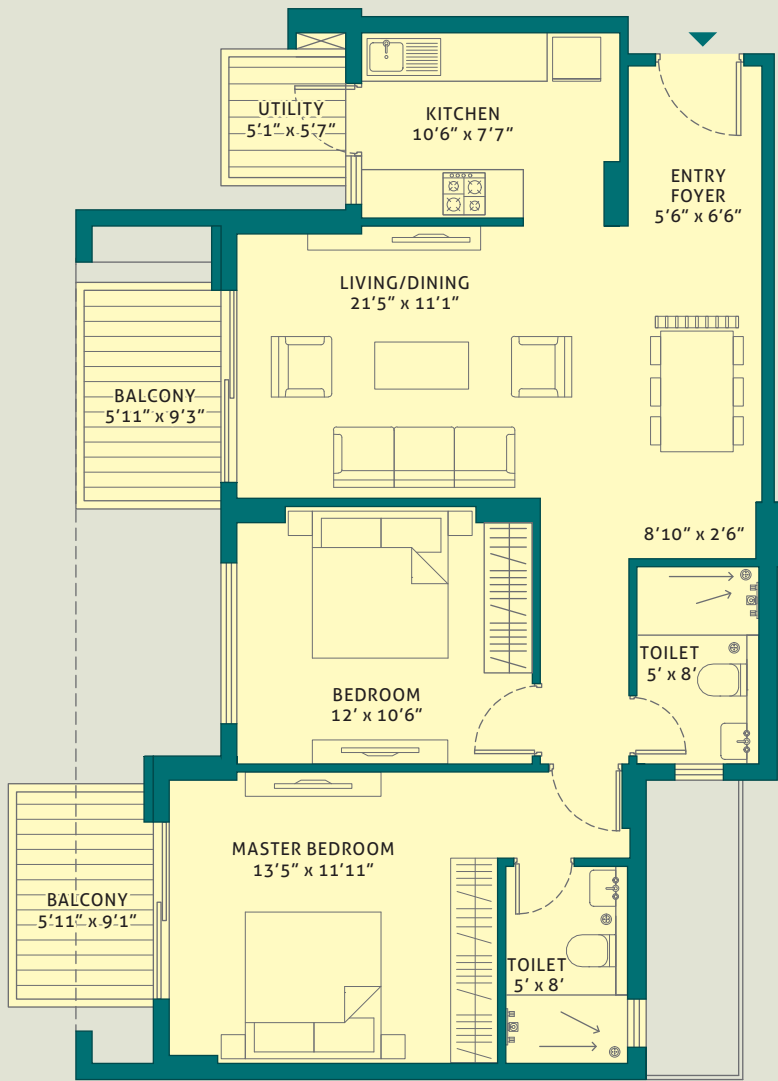
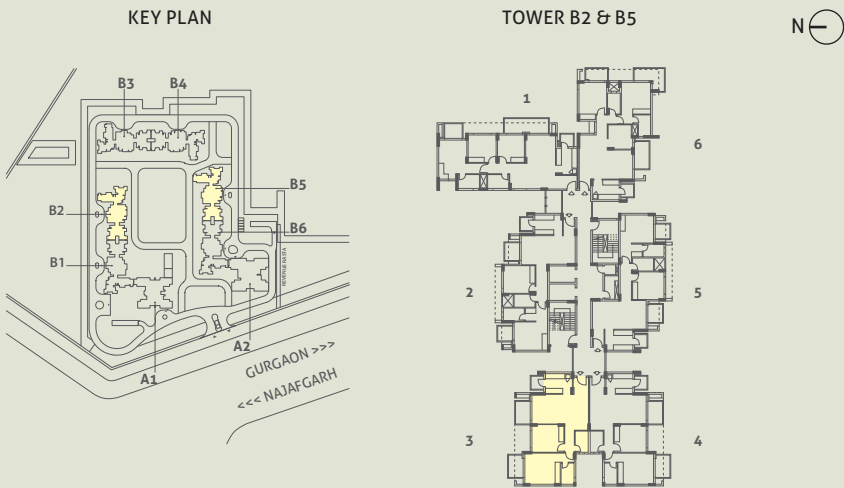


This is a typical floor plan, subject to minor variations. The furniture, fixtures and fittings etc. are for representative purposes and do not constitute part of the final product or any part thereof. The room measurements are mentioned in meters.

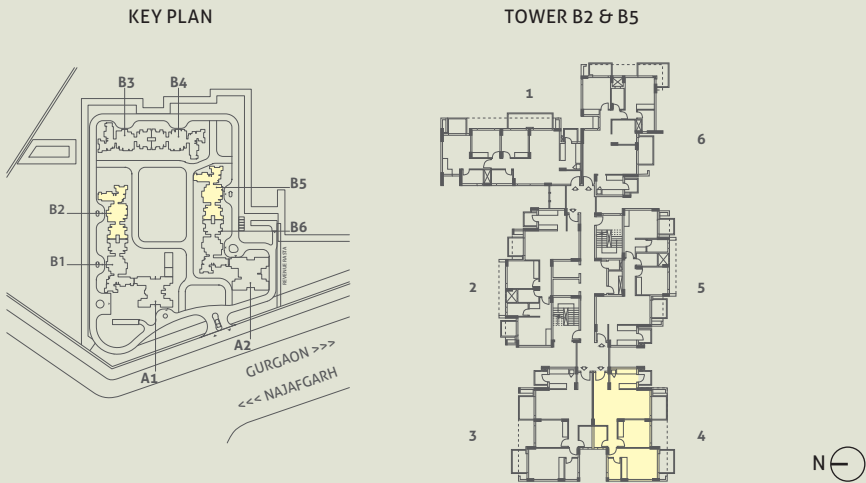
This is a typical floor plan, subject to minor variations. The furniture, fixtures and fittings etc. are for representative purposes and do not constitute part of the final product or any part thereof. The room measurements are mentioned in meters.

UNIT PLANS

TOWER - B2 & B5
UNIT 3
2 BHK (L)
LEVEL - GROUND TO 13th
RERA CARPET AREA - 75.26 SQ. M. (810.04 SQ. FT.)
BALCONY AREA - 12.63 SQ. M. (135.95 SQ. FT.)



TOWER - B2 & B5
UNIT 4
2 BHK (L)
LEVEL - GROUND TO 13th
RERA CARPET AREA - 75.26 SQ. M. (810.04 SQ. FT.)
BALCONY AREA - 12.63 SQ. M. (135.95 SQ. FT.)

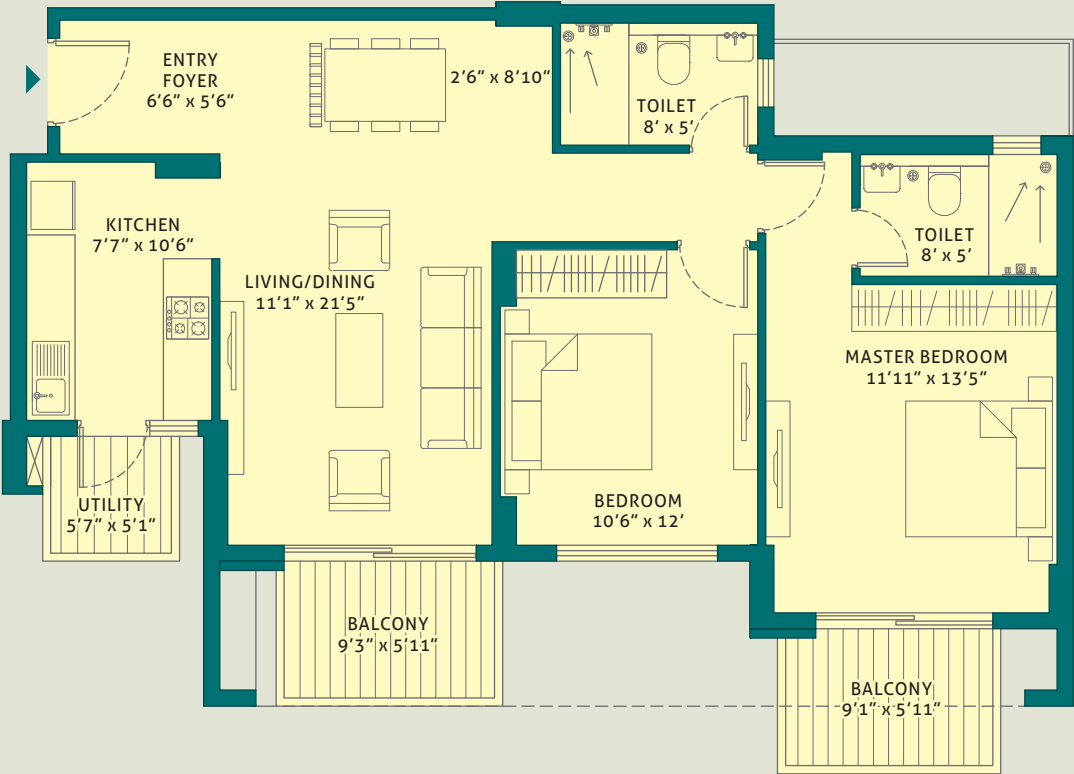
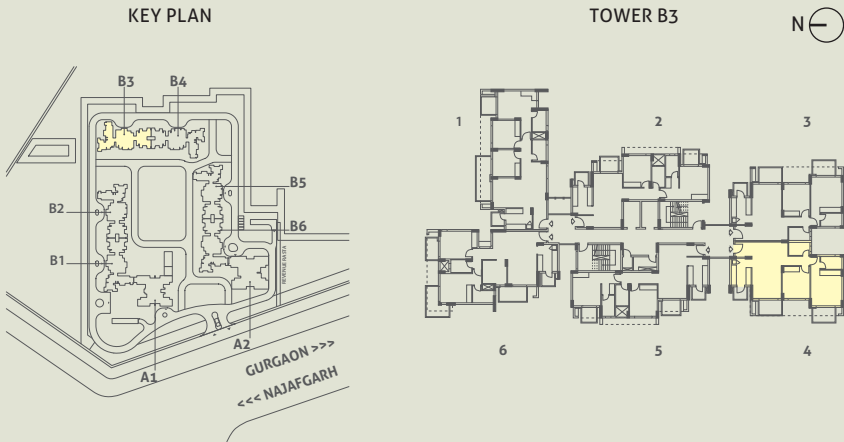


This is a typical floor plan, subject to minor variations. The furniture, fixtures and fittings etc. are for representative purposes and do not constitute part of the final product or any part thereof. The room measurements are mentioned in meters.

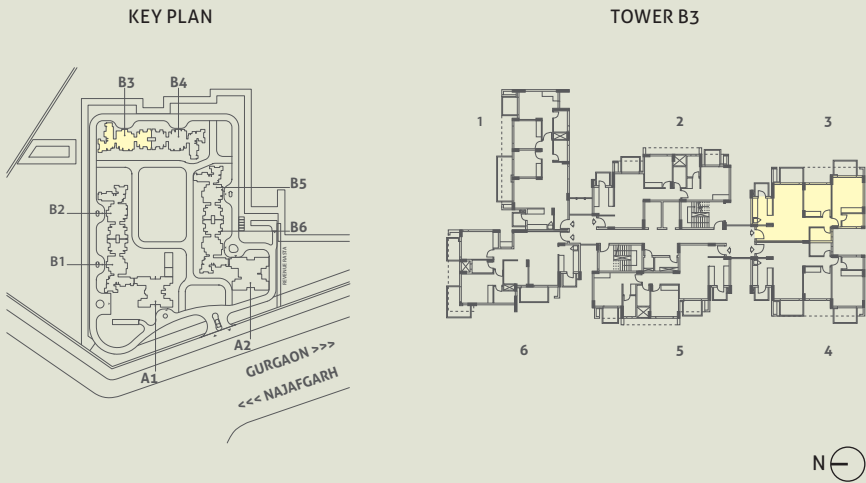
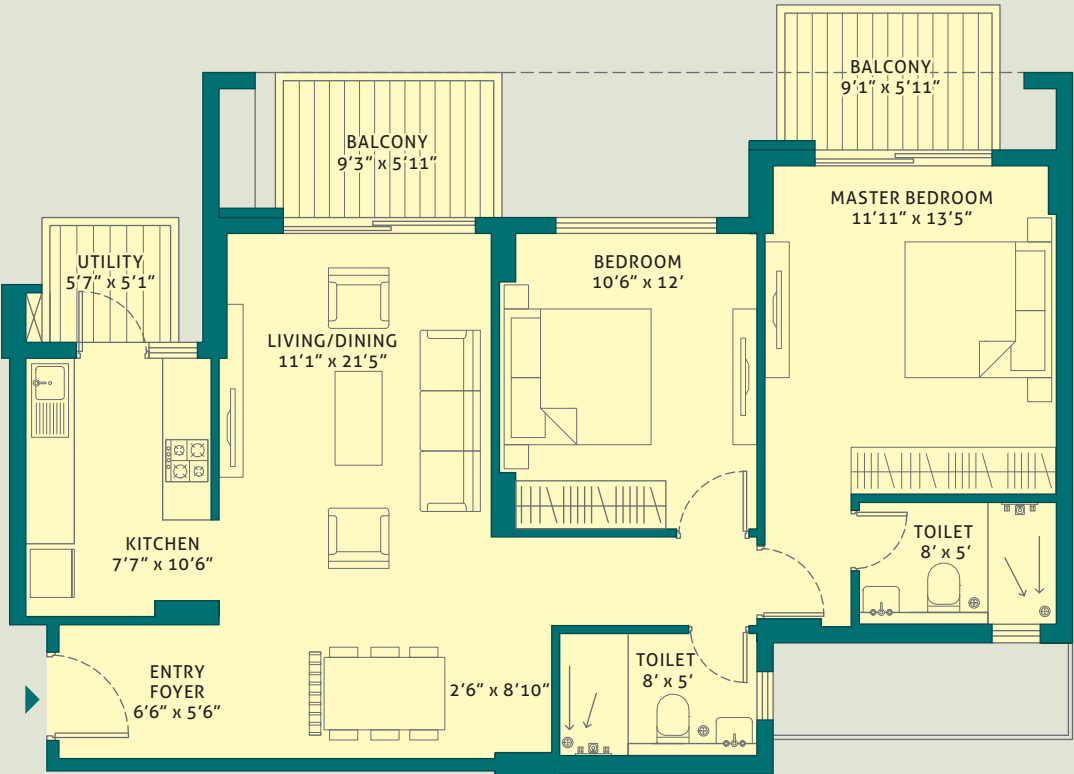
This is a typical floor plan, subject to minor variations. The furniture, fixtures and fittings etc. are for representative purposes and do not constitute part of the final product or any part thereof. The room measurements are mentioned in meters.

UNIT PLANS

TOWER - B3
UNIT 4
2 BHK (L)
LEVEL - GROUND TO 13th
RERA CARPET AREA - 75.26 SQ. M. (810.04 SQ. FT.)
BALCONY AREA - 12.63 SQ. M. (135.95 SQ. FT.)



This is a typical floor plan, subject to minor variations. The furniture, fixtures and fittings etc. are for representative purposes and do not constitute part of the final product or any part thereof. The room measurements are mentioned in meters.

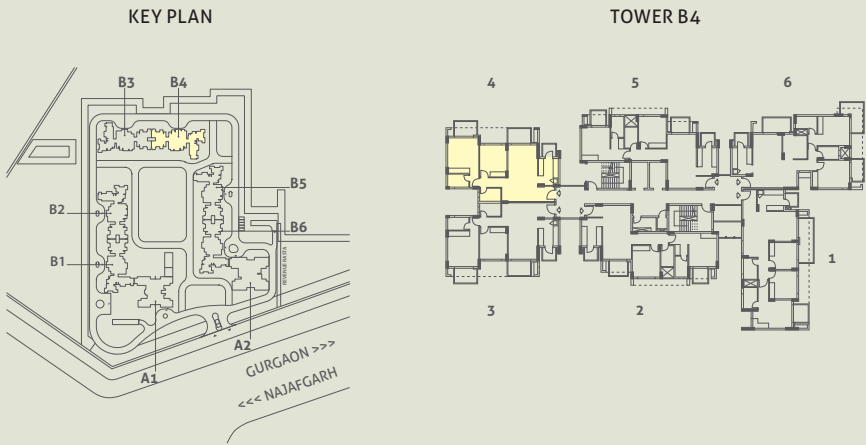
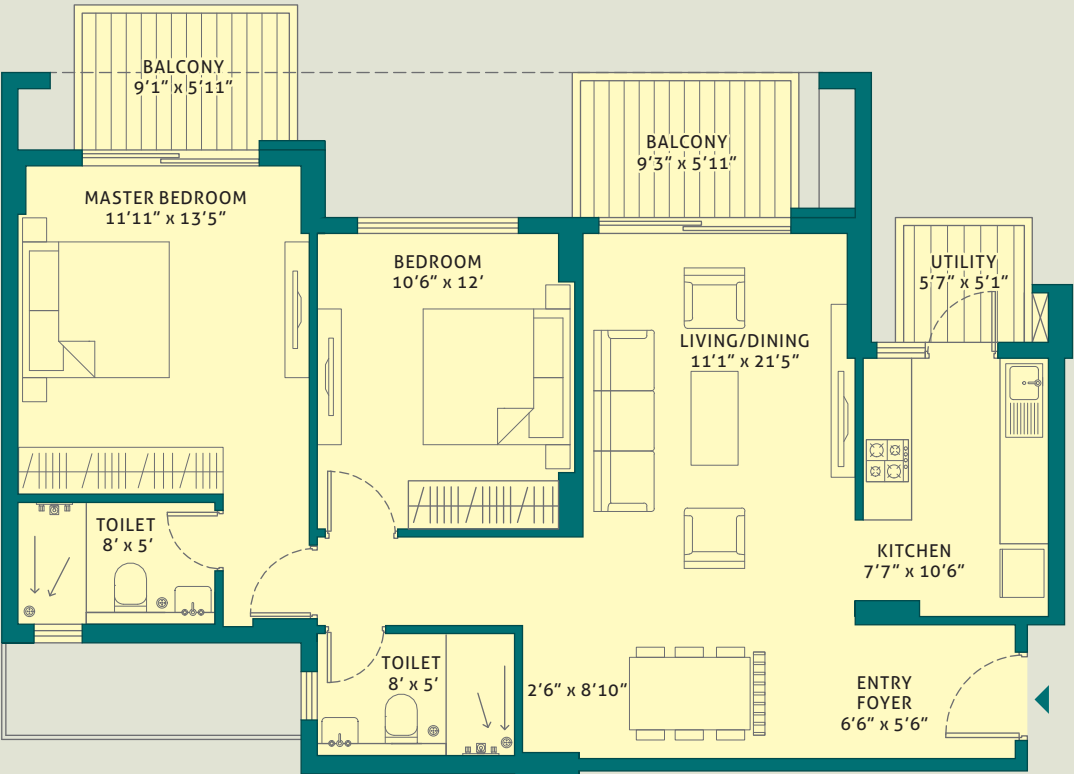
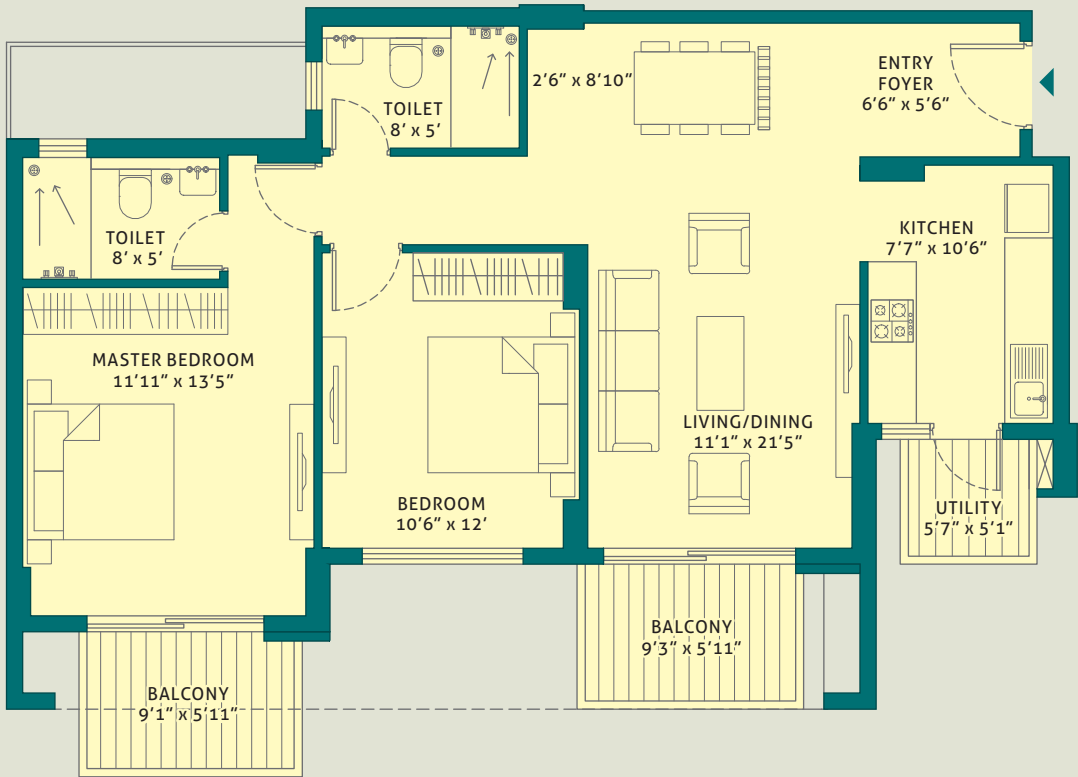
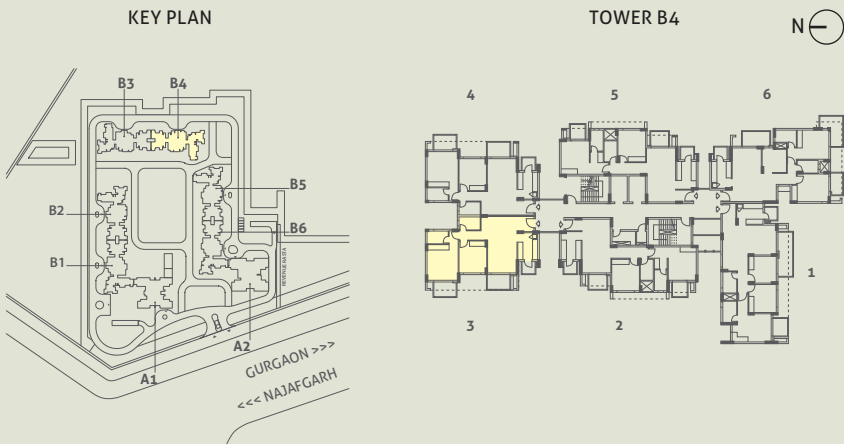


TOWER - B3
UNIT 3
2 BHK (L)
LEVEL - GROUND TO 13th
RERA CARPET AREA - 75.26 SQ. M. (810.04 SQ. FT.)
BALCONY AREA - 12.63 SQ. M. (135.95 SQ. FT.)

This is a typical floor plan, subject to minor variations. The furniture, fixtures and fittings etc. are for representative purposes and do not constitute part of the final product or any part thereof. The room measurements are mentioned in meters.

UNIT PLANS

TOWER - B4
UNIT 3
2 BHK (L)
LEVEL - GROUND TO 13th
RERA CARPET AREA - 75.26 SQ. M. (810.04 SQ. FT.)
BALCONY AREA - 12.63 SQ. M. (135.95 SQ. FT.)



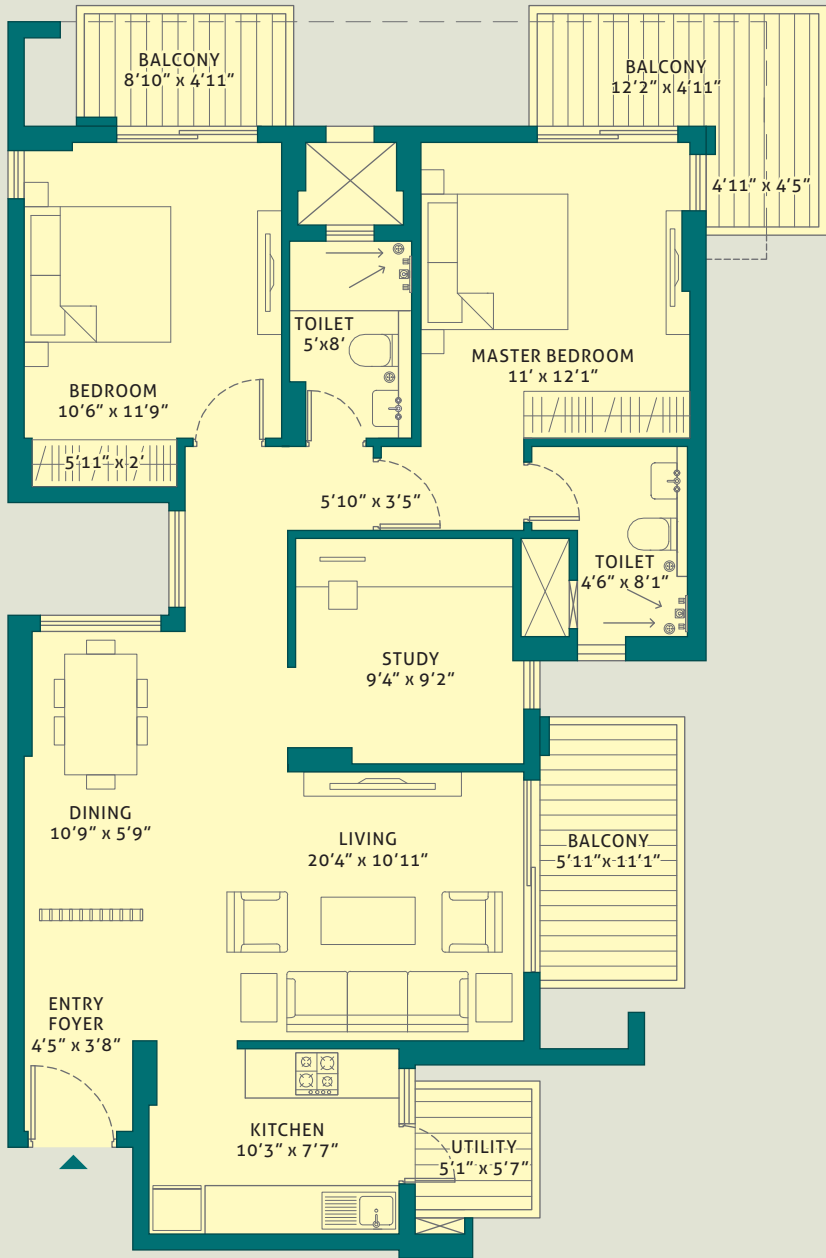
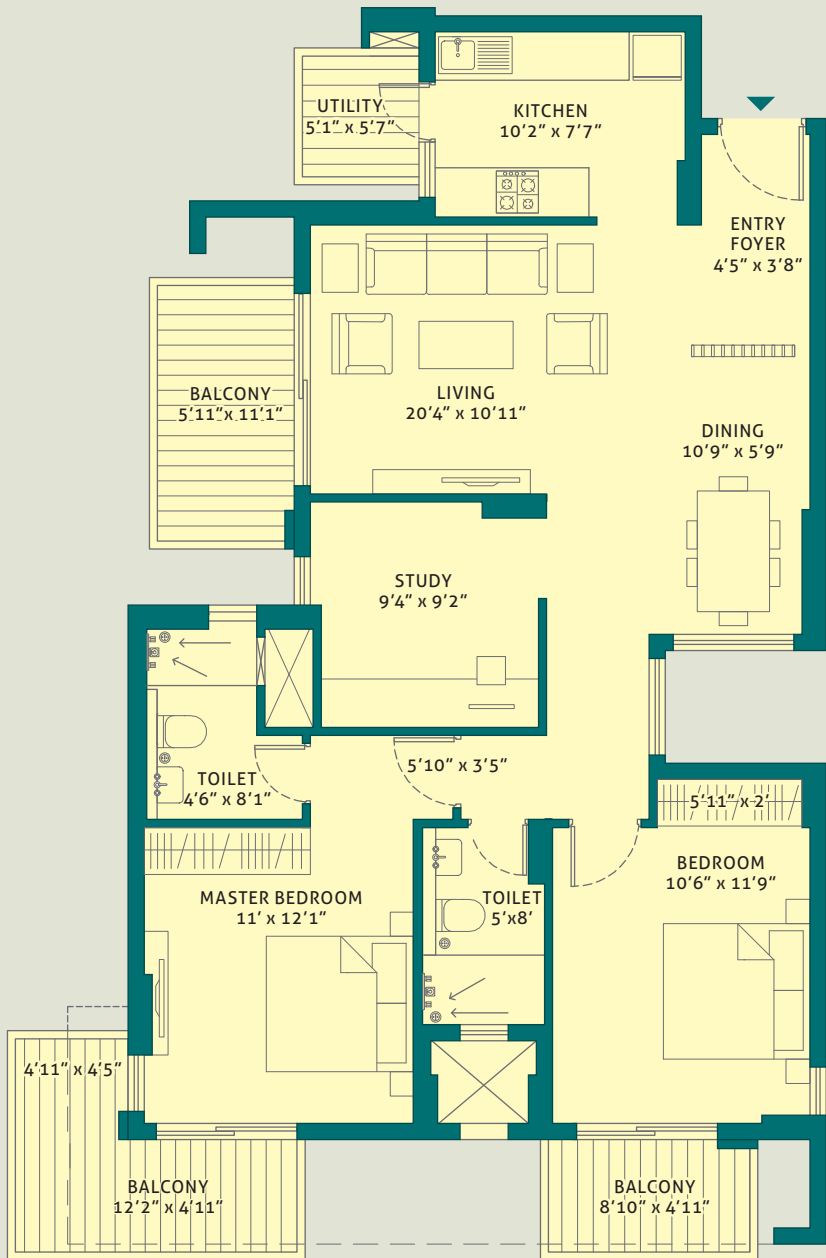
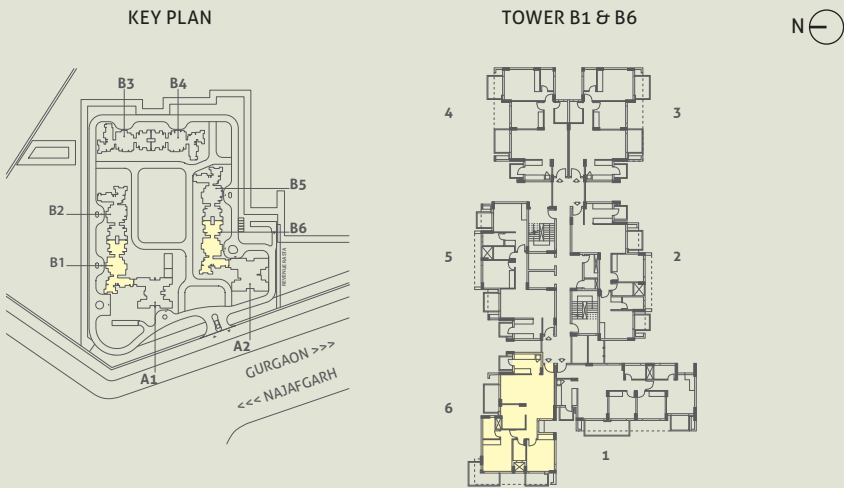
TOWER - B4
UNIT 4
2 BHK (L)
LEVEL - GROUND TO 13th
RERA CARPET AREA - 75.26 SQ. M. (810.04 SQ. FT.)
BALCONY AREA - 12.63 SQ. M. (135.95 SQ. FT.)

This is a typical floor plan, subject to minor variations. The furniture, fixtures and fittings etc. are for representative purposes and do not constitute part of the final product or any part thereof. The room measurements are mentioned in meters.

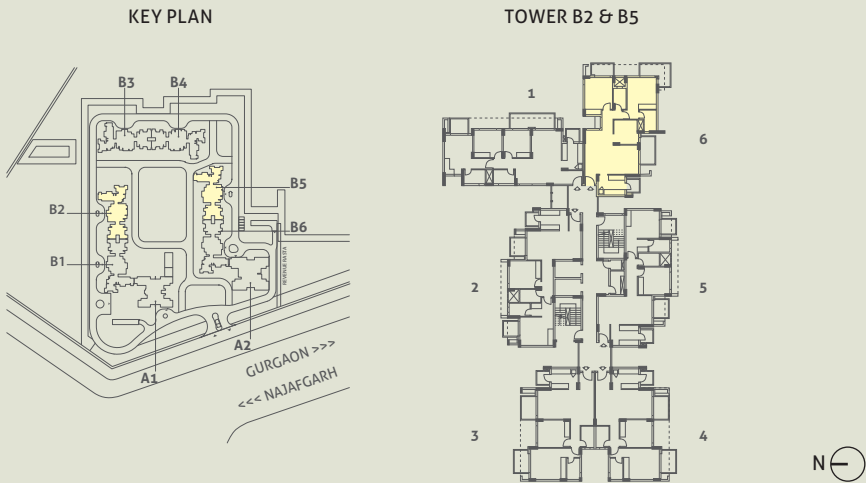
This is a typical floor plan, subject to minor variations. The furniture, fixtures and fittings etc. are for representative purposes and do not constitute part of the final product or any part thereof. The room measurements are mentioned in meters.

UNIT PLANS

TOWER - B1 & B6
UNIT 6
2 BHK (STUDY)
LEVEL - GROUND TO 13th
RERA CARPET AREA - 83.99 SQ. M. (904.01 SQ. FT.)
BALCONY AREA - 20.18 SQ. M. (217.24 SQ. FT.)



TOWER - B2 & B5
UNIT 6
2 BHK (STUDY)
LEVEL - GROUND TO 13th
RERA CARPET AREA - 83.99 SQ. M. (904.01 SQ. FT.)
BALCONY AREA - 20.18 SQ. M. (217.24 SQ. FT.)

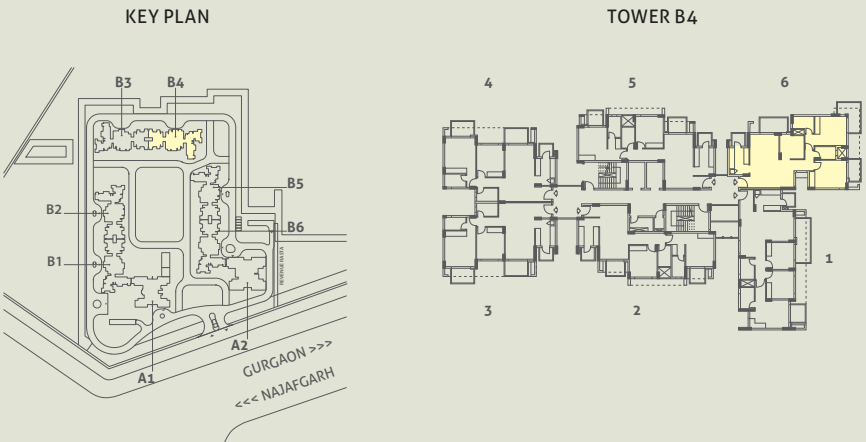
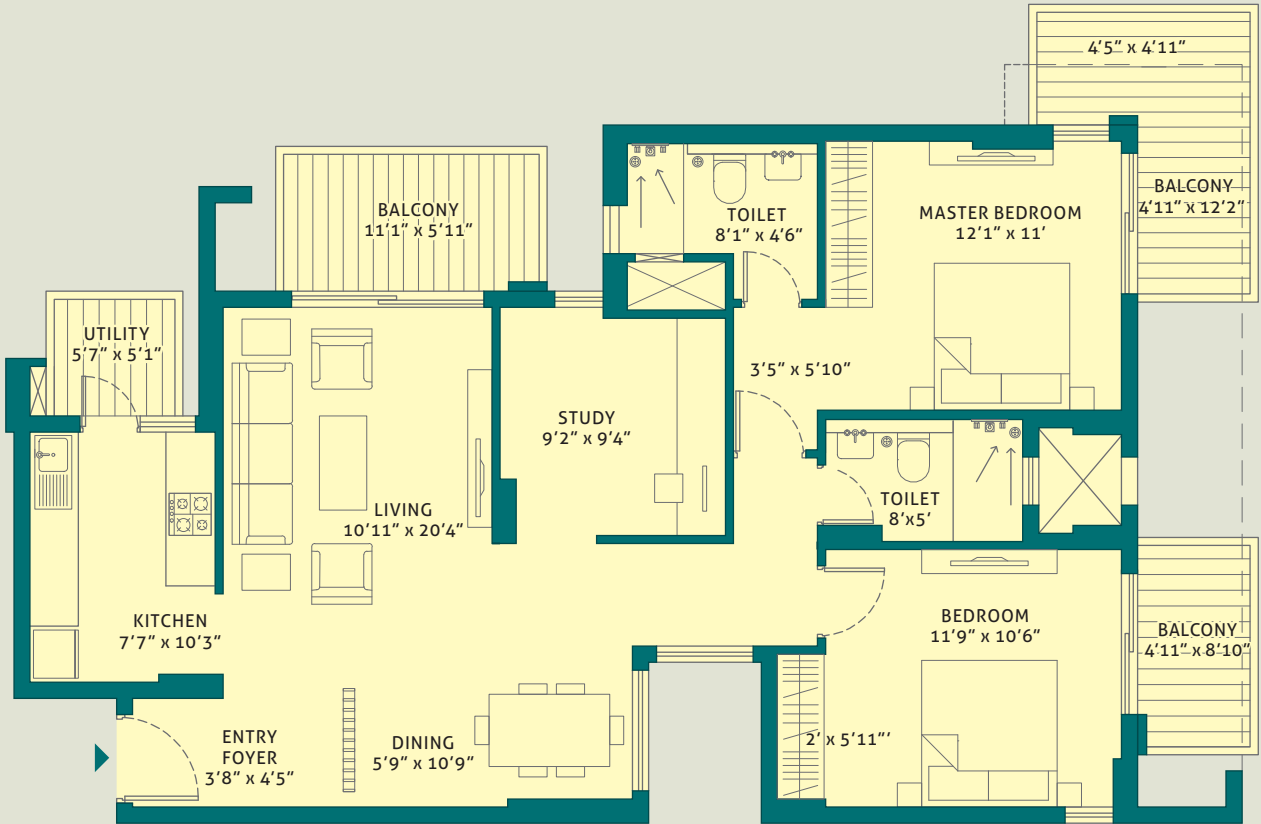
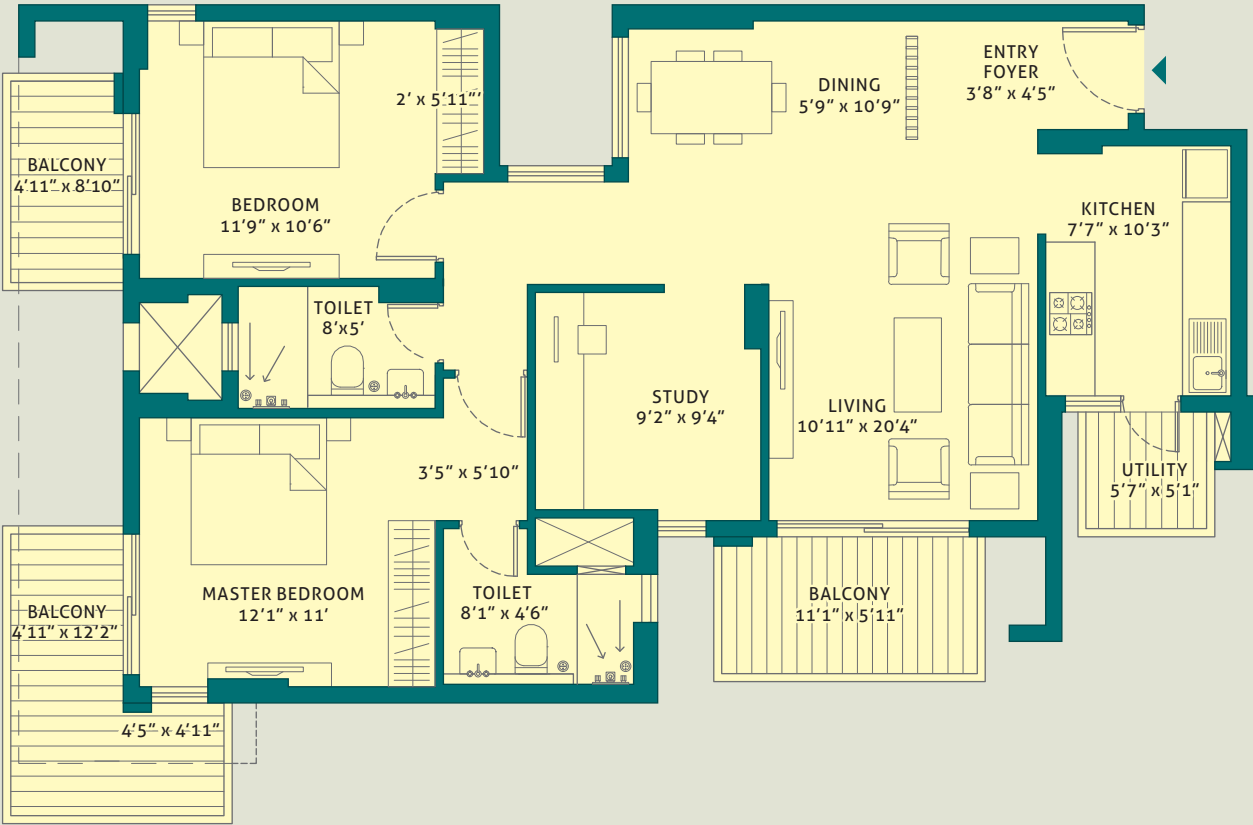
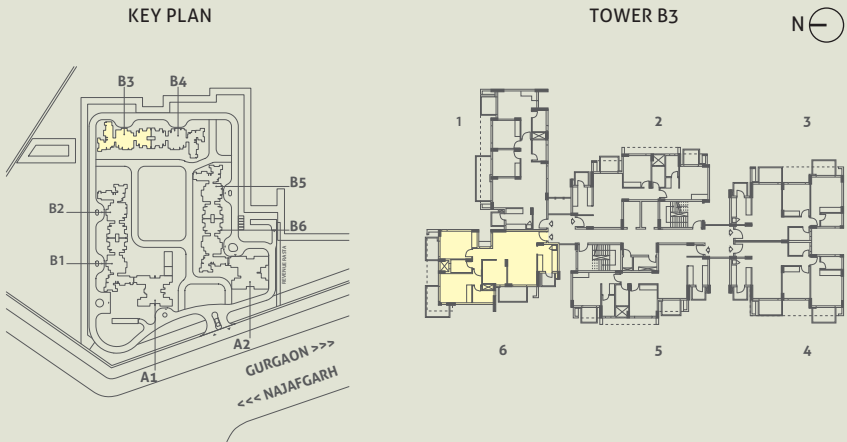


This is a typical floor plan, subject to minor variations. The furniture, fixtures and fittings etc. are for representative purposes and do not constitute part of the final product or any part thereof. The room measurements are mentioned in meters.

This is a typical floor plan, subject to minor variations. The furniture, fixtures and fittings etc. are for representative purposes and do not constitute part of the final product or any part thereof. The room measurements are mentioned in meters.

UNIT PLANS

TOWER - B3
UNIT 6
2 BHK (STUDY)
LEVEL - GROUND TO 13th
RERA CARPET AREA - 83.99 SQ. M. (904.01 SQ. FT.)
BALCONY AREA - 20.18 SQ. M. (217.24 SQ. FT.)



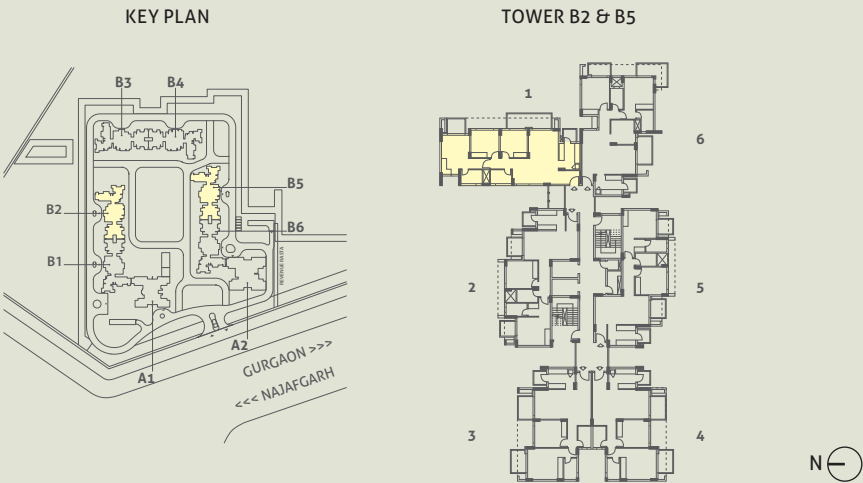
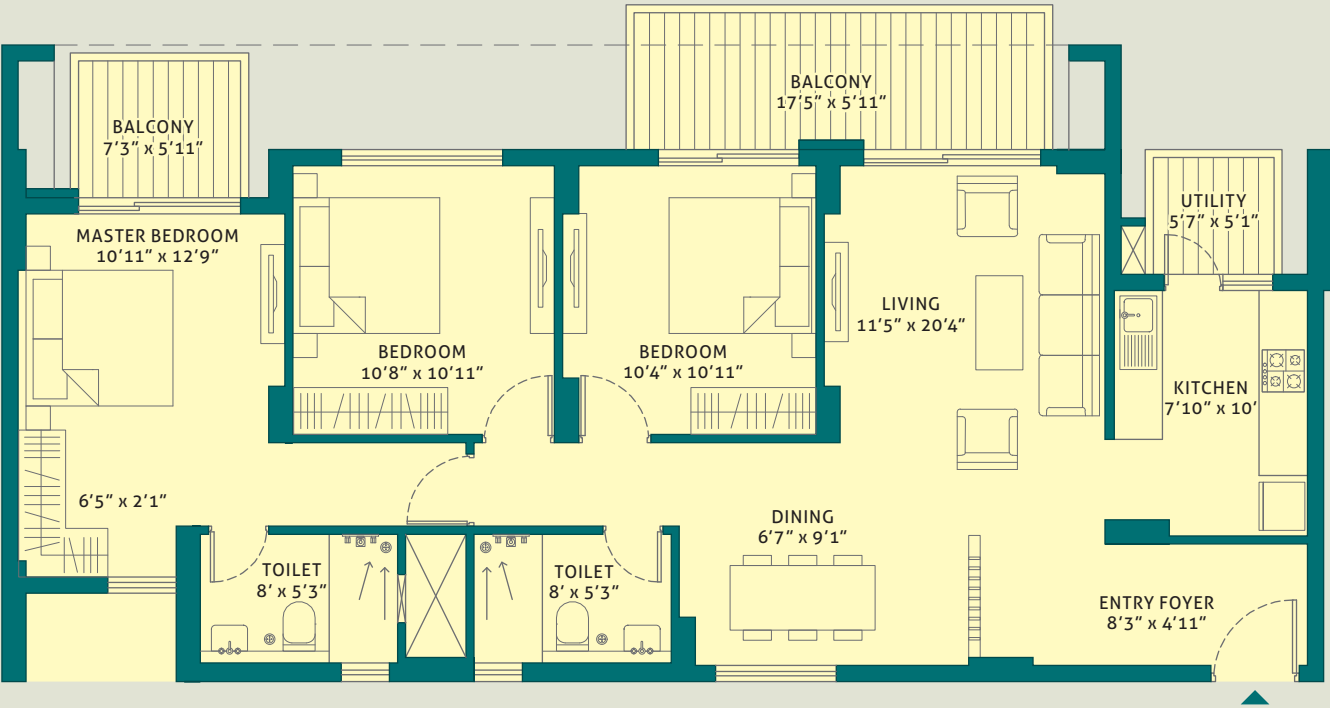
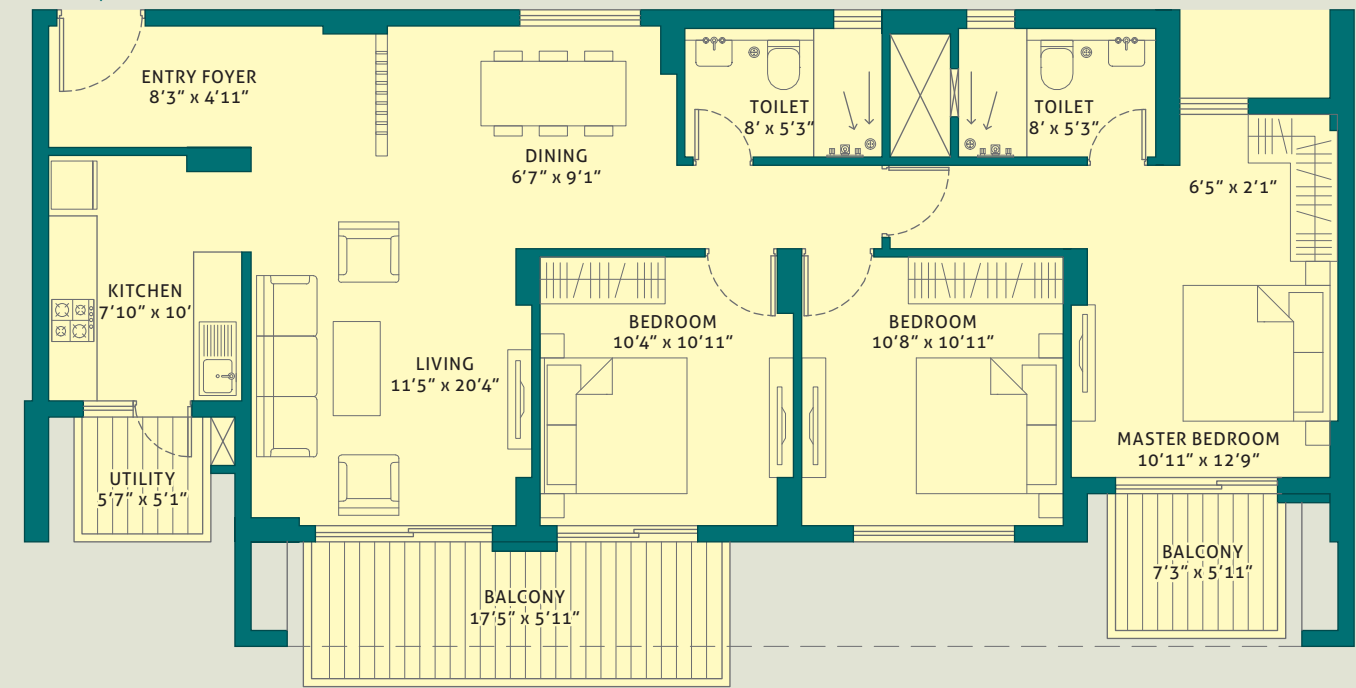
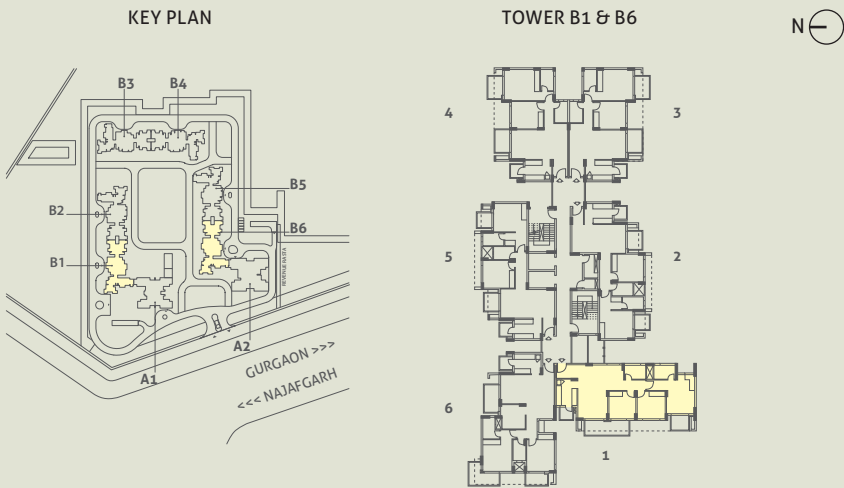
TOWER - B4
UNIT 6
2 BHK (STUDY)
LEVEL - GROUND TO 13th
RERA CARPET AREA - 83.99 SQ. M. (904.01 SQ. FT.)
BALCONY AREA - 20.18 SQ. M. (217.24 SQ. FT.)

This is a typical floor plan, subject to minor variations. The furniture, fixtures and fittings etc. are for representative purposes and do not constitute part of the final product or any part thereof. The room measurements are mentioned in meters.

This is a typical floor plan, subject to minor variations. The furniture, fixtures and fittings etc. are for representative purposes and do not constitute part of the final product or any part thereof. The room measurements are mentioned in meters.

UNIT PLANS

TOWER - B1 & B6
UNIT 1
3 BHK (C)
LEVEL - GROUND TO 13th
RERA CARPET AREA - 88.39 SQ. M. (951.43 SQ. FT.)
BALCONY AREA - 16.06 SQ. M. (172.85 SQ. FT.)



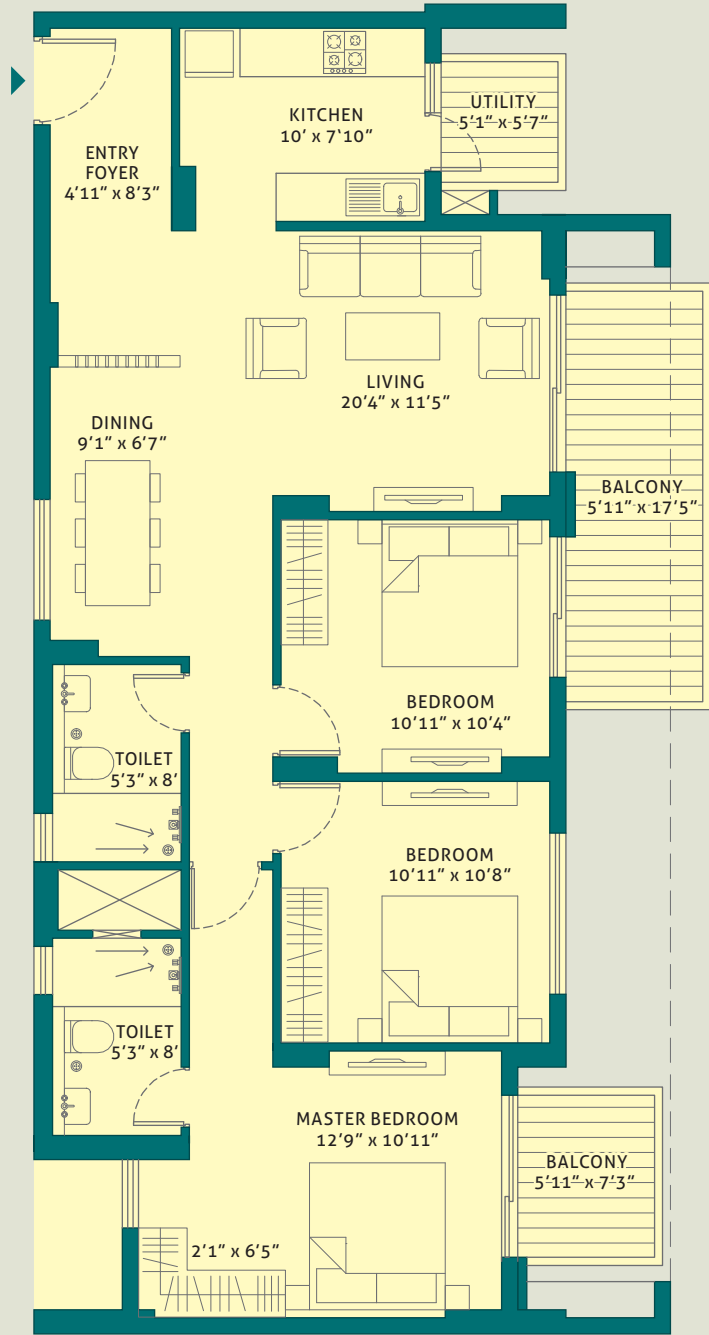
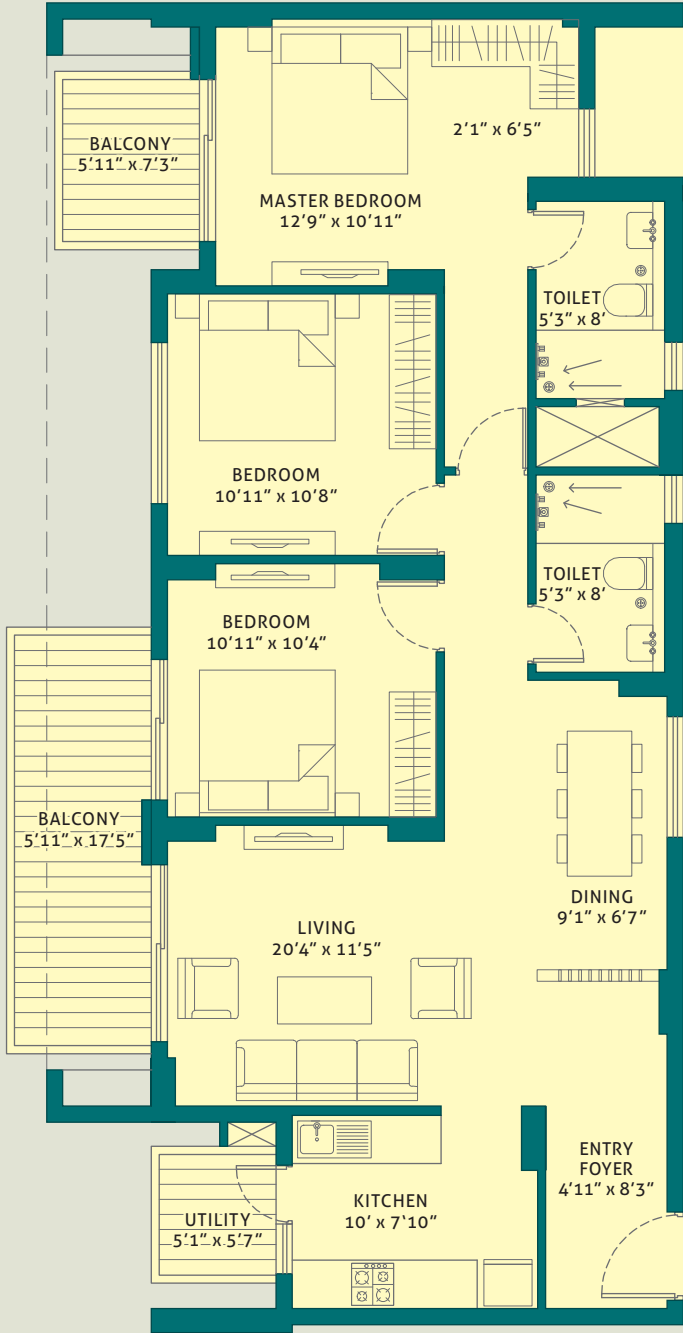
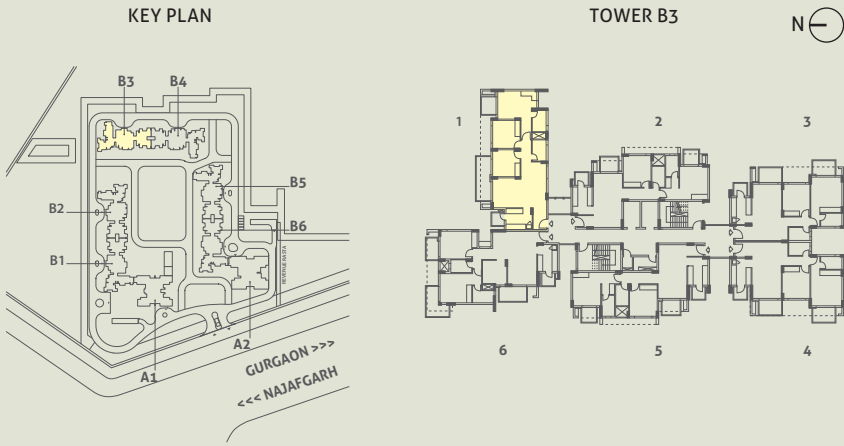
TOWER - B2 & B5
UNIT 1
3 BHK (C)
LEVEL - GROUND TO 13th
RERA CARPET AREA - 88.39 SQ. M. (951.43 SQ. FT.)
BALCONY AREA - 16.06 SQ. M. (172.85 SQ. FT.)

This is a typical floor plan, subject to minor variations. The furniture, fixtures and fittings etc. are for representative purposes and do not constitute part of the final product or any part thereof. The room measurements are mentioned in meters.

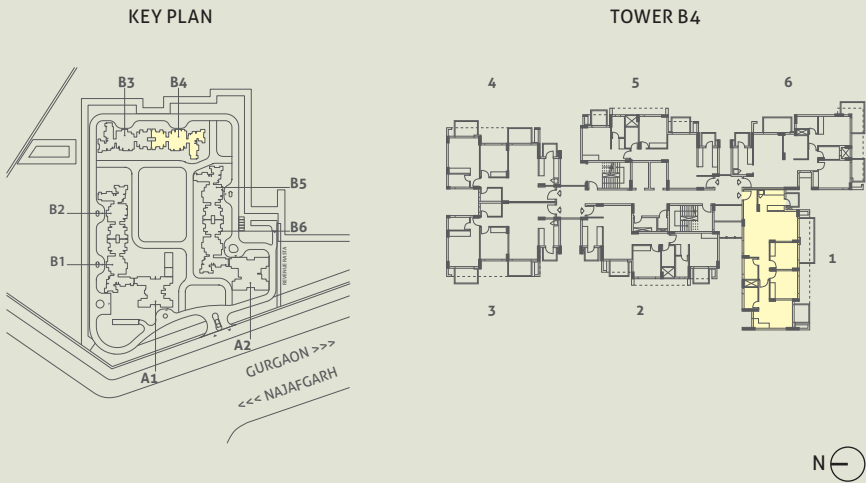
This is a typical floor plan, subject to minor variations. The furniture, fixtures and fittings etc. are for representative purposes and do not constitute part of the final product or any part thereof. The room measurements are mentioned in meters.

UNIT PLANS

TOWER - B3
UNIT 1
3 BHK (C)
LEVEL - GROUND TO 13th
RERA CARPET AREA - 88.39 SQ. M. (951.43 SQ. FT.)
BALCONY AREA - 16.06 SQ. M. (172.85 SQ. FT.)



TOWER - B4
UNIT 1
3 BHK (C)
LEVEL - GROUND TO 13th
RERA CARPET AREA - 88.39 SQ. M. (951.43 SQ. FT.)
BALCONY AREA - 16.06 SQ. M. (172.85 SQ. FT.)



This is a typical floor plan, subject to minor variations. The furniture, fixtures and fittings etc. are for representative purposes and do not constitute part of the final product or any part thereof. The room measurements are mentioned in meters.

This is a typical floor plan, subject to minor variations. The furniture, fixtures and fittings etc. are for representative purposes and do not constitute part of the final product or any part thereof. The room measurements are mentioned in meters.